

Anti-RHO antibody (C-Term) (STJ117287)

GENERAL INFORMATION

Product Type	Primary antibodies
Applications	WB/IHC-P/ELISA
Host / Source	Rabbit
Reactivity	Mouse/Rat

PRODUCT PROPERTIES

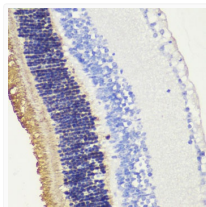
Clonality	Polyclonal
Concentration	Lot specific
Conjugation	Unconjugated
Purification	Affinity purification
Dilution Range	WB:1:500-1:2000 IHC-P:1:50-1:200 ELISA:Recommended starting concentration is 1 μ g/mL. Please optimize the concentration based on your specific assay requirements.
Formulation	PBS with 0.01% Thimerosal, 50% Glycerol, pH 7.3.
Isotype	IgG
Molecular Weight	Protein Mw: 39kDa Observed Mw: 39kDa
Storage Instruction	Store at -20°C for up to 1 year from the date of receipt, and avoid repeat freeze-thaw cycles.

TARGET INFORMATION

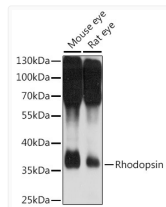
Gene ID	6010
Gene Symbol	RHO
UniProt ID	OPSD_HUMAN
Immunogen Region	C-Term
Immunogen Sequence	NESFVIYMFVVHFTIPMIII FFCYGQLVFTVKEAAQQQE SATTQKAEKEVTRMVIIMVI AFLICWVPYASVAFYIFTHQ GSNFGPIFMTIPAFFAKSAA IYNPVIYIMMNKQFRNCMLT TICCGKNPLGDDEASATVSK TETSQVAPA
Specificity	A synthetic peptide corresponding to a sequence within amino acids 200 to the C-terminus of human Rhodopsin (NP_000530.1).

ADDITIONAL INFORMATION

Note **STRICTLY FOR FURTHER SCIENTIFIC RESEARCH USE ONLY (RUO). MUST NOT TO BE USED IN DIAGNOSTIC OR THERAPEUTIC APPLICATIONS.**



Immunohistochemistry analysis of Rhodopsin in paraffin-embedded mouse retina using Rhodopsin Rabbit polyclonal antibody (STJ117287) at dilution of 1:200 (40x lens). Perform microwave antigen retrieval with 10 mM PBS buffer pH 7.2 before commencing with immunohistochemistry staining protocol.



Western blot analysis of various lysates using Rhodopsin Rabbit polyclonal antibody (STJ117287) at 1:1000 dilution. Secondary antibody: HRP Goat Anti-Rabbit IgG (H+L) (STJS000856) at 1:10000 dilution. Lysates/proteins: 25 μ g per lane. Blocking buffer: 3% nonfat dry milk in TBST. Detection: ECL Basic Kit. Exposure time: 10s.