

Anti-LRP6 antibody (20-150) (STJ117264)

GENERAL INFORMATION

Product Type	Primary antibodies
Applications	IF/ICC/ELISA
Host / Source	Rabbit
Reactivity	Human

PRODUCT PROPERTIES

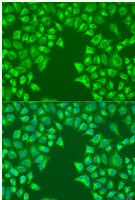
Clonality	Polyclonal
Concentration	Lot specific
Conjugation	Unconjugated
Purification	Affinity purification
Dilution Range	IF/ICC:1:50-1:200 ELISA:Recommended starting concentration is 1 µg/mL. Please optimize the concentration based on your specific assay requirements.
Formulation	PBS with 0.02% Sodium Azide, 50% Glycerol, pH 7.3.
Isotype	IgG
Molecular Weight	Protein Mw: 180kDa Observed Mw:
Storage Instruction	Store at -20°C for up to 1 year from the date of receipt, and avoid repeat freeze-thaw cycles.

TARGET INFORMATION

Gene ID	4040
Gene Symbol	LRP6
UniProt ID	LRP6_HUMAN
Immunogen Region	20-150
Immunogen Sequence	APLLLYANRRDLRLVDATNG KENATIVVGGLEDAAAVDFV FSHGLIYSDVSEEAIKRTE FNKTESVQNVVVSGLLSPDG LACDWLGEKLYWTDSETNRI EVSNLDGSLRKVLFWQELDQ PRAIALDPSSG
Specificity	Recombinant fusion protein containing a sequence corresponding to amino acids 20-150 of human LRP6 (NP_002327.2).

ADDITIONAL INFORMATION

Note STRICTLY FOR FURTHER SCIENTIFIC RESEARCH USE ONLY (RUO). MUST NOT TO BE USED IN DIAGNOSTIC OR THERAPEUTIC APPLICATIONS.



Immunofluorescence analysis of U2OS cells using LRP6 antibody (STJ117264) at dilution of 1:100. Blue: DAPI for nuclear staining.