

Anti-GCK antibody (250-465) (STJ117253)

GENERAL INFORMATION

Product Type	Primary antibodies
Applications	WB/ELISA
Host / Source	Rabbit
Reactivity	Human/Mouse/Rat

PRODUCT PROPERTIES

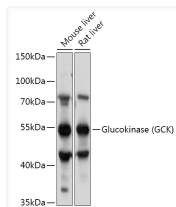
Clonality	Polyclonal
Concentration	Lot specific
Conjugation	Unconjugated
Purification	Affinity purification
Dilution Range	WB:1:500-1:1000
Formulation	PBS with 0.09% Sodium Azide, 50% Glycerol, pH 7.3.
Isotype	IgG
Molecular Weight	Protein Mw: 52kDa Observed Mw: 52kDa
Storage Instruction	Store at -20°C for up to 1 year from the date of receipt, and avoid repeat freeze-thaw cycles.

TARGET INFORMATION

Gene ID	2645
Gene Symbol	GCK
UniProt ID	HXX4_HUMAN
Immunogen Region	250-465
Immunogen Sequence	RMCVNTEWGAFGDSEGLDEF LLEYDRLVDESSANPGQQLY EKLIGGKYMGEVLRLVLLRL VDENLLFHGEASEQLRTRGA FETRFVSVQVESDTGDRKQIY NILSTLGLRPSTTDCDIVRR ACESVSTRAAHMCSAGLAGV INRMRESRSEDVMRITVGVD GSVYKLHPSFKERFHASVRR LTPSCEITFIESEEGSRGA ALVSAVACKKACMLGQ
Specificity	Recombinant fusion protein containing a sequence corresponding to amino acids 250-465 of human Glucokinase (Glucokinase (GCK)) (NP_000153.1).

ADDITIONAL INFORMATION

Note STRICTLY FOR FURTHER SCIENTIFIC RESEARCH USE ONLY (RUO). MUST NOT TO BE USED IN DIAGNOSTIC OR THERAPEUTIC APPLICATIONS.



Western blot analysis of various lysates using Glucokinase (GCK) Rabbit polyclonal antibody (STJ117253) at 1:1000 dilution. Secondary antibody: HRP Goat Anti-Rabbit IgG (H+L) (STJS000856) at 1:10000 dilution. Lysates/proteins: 25 μ g per lane. Blocking buffer: 3% nonfat dry milk in TBST. Detection: ECL Basic Kit. Exposure time: 10s.