

## Anti-DCN antibody (31-359) (STJ117242)

### GENERAL INFORMATION

Product Type	Primary antibodies
Applications	WB/IHC-P/IF/ICC/ELISA
Host / Source	Rabbit
Reactivity	Human/Mouse/Rat

### PRODUCT PROPERTIES

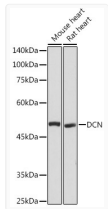
Clonality	Polyclonal
Concentration	Lot specific
Conjugation	Unconjugated
Purification	Affinity purification
Dilution Range	WB:1:500-1:1000 IHC-P:1:50-1:200 IF/ICC:1:50-1:200 ELISA:Recommended starting concentration is 1 Mu g/mL. Please optimize the concentration based on your specific assay requirements.
Formulation	PBS with 0.05% Proclin300, 50% Glycerol, pH 7.3.
Isotype	IgG
Molecular Weight	Protein Mw: 40kDa Observed Mw: 45kDa/48kDa
Storage Instruction	Store at -20°C for up to 1 year from the date of receipt, and avoid repeat freeze-thaw cycles.

### TARGET INFORMATION

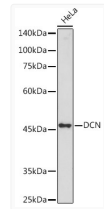
Gene ID	<a href="#">1634</a>
Gene Symbol	<a href="#">DCN</a>
UniProt ID	<a href="#">PGS2_HUMAN</a>
Immunogen Region	31-359
Immunogen Sequence	DEASGIGPEVPPDRDFEPL GPVGFRCQCHLRVVCSDL GLDKVPKDLPPDTLLDLQN NKITEIKDGFKNLKNLHAL ILVNNKISKVSPGAFTPLVK LERLYLSKNQLKELPEKMPK TLQELRAHENEITKVRKVTF NGLNQMIVIELGTNPLKSSG IENGAFQGMKLSYIRIADT NITSIPQGLPPSLTELHLDG NKISRVDAASLKGLNNLAKL GLSFNSISAVDNGSLANTP
Specificity	A synthetic peptide corresponding to a sequence within amino acids 31-359 of human DCN (NP_001911.1).

### ADDITIONAL INFORMATION

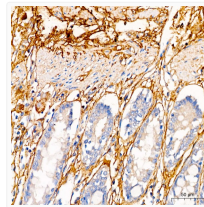
Note **STRICTLY FOR FURTHER SCIENTIFIC RESEARCH USE ONLY (RUO). MUST NOT TO BE USED IN DIAGNOSTIC OR THERAPEUTIC APPLICATIONS.**



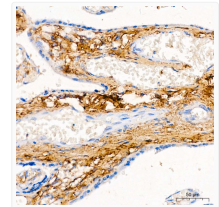
Western blot analysis of extracts of various cell lines, using DCN antibody (STJ117242) at 1:1000 dilution. Secondary antibody: HRP Goat Anti-rabbit IgG (H+L) (STJS000856) at 1:10000 dilution. Lysates/proteins: 25 Mu g per lane. Blocking buffer: 3% non-fat dry milk in TBST. Detection: ECL Basic Kit. Exposure time: 3s.



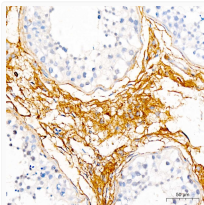
Western blot analysis of extracts of HeLa cells, using DCN antibody (STJ117242) at 1:1000 dilution. Secondary antibody: HRP Goat Anti-rabbit IgG (H+L) (STJS000856) at 1:10000 dilution. Lysates/proteins: 25 Mu g per lane. Blocking buffer: 3% non-fat dry milk in TBST. Detection: ECL Basic Kit. Exposure time: 30s.



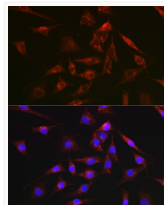
Immunohistochemistry analysis of paraffin-embedded human colon using DCN rabbit polyclonal antibody (STJ117242) at dilution of 1:50 (40x lens). Perform high pressure antigen retrieval with 10 mM citrate buffer pH 6.0 before commencing with immunohistochemistry staining protocol.



Immunohistochemistry analysis of paraffin-embedded human placenta using DCN rabbit polyclonal antibody (STJ117242) at dilution of 1:50 (40x lens). Perform high pressure antigen retrieval with 10 mM citrate buffer pH 6.0 before commencing with immunohistochemistry staining protocol.



Immunohistochemistry analysis of paraffin-embedded human testis using DCN rabbit polyclonal antibody (STJ117242) at dilution of 1:50 (40x lens). Perform high pressure antigen retrieval with 10 mM citrate buffer pH 6.0 before commencing with immunohistochemistry staining protocol.



Immunofluorescence analysis of NIH-3T3 cells using DCN rabbit polyclonal antibody (STJ117242) at dilution of 1:100 (40x lens). Blue: DAPI for nuclear staining.