

Anti-ADK antibody (200-345) (STJ117217)

GENERAL INFORMATION

Product Type	Primary antibodies
Applications	WB/IHC-P/IF/ICC/ELISA
Host / Source	Rabbit
Reactivity	Human/Mouse/Rat

PRODUCT PROPERTIES

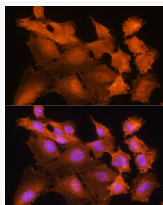
Clonality	Polyclonal
Concentration	Lot specific
Conjugation	Unconjugated
Purification	Affinity purification
Dilution Range	WB:1:500-1:2000 IHC-P:1:100-1:500 IF/CC:1:50-1:200 ELISA:Recommended starting concentration is 1 Mu g/mL. Please optimize the concentration based on your specific assay requirements.
Formulation	PBS with 0.01% Thimerosal, 50% Glycerol, pH 7.3.
Isotype	IgG
Molecular Weight	Protein Mw: 41kDa Observed Mw: 41kDa
Storage Instruction	Store at -20°C for up to 1 year from the date of receipt, and avoid repeat freeze-thaw cycles.

TARGET INFORMATION

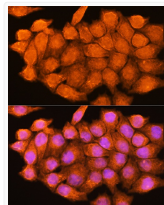
Gene ID	132
Gene Symbol	ADK
UniProt ID	ADK_HUMAN
Immunogen Region	200-345
Immunogen Sequence	PFISQFYKESLMKVMYPYVDI LFGNETEATFAREQGFETK DIKEIAKKTQALPKMNSKRQ RIVIFTQGRDDTIMATESEV TAFAVLDQDQKEIIDTNGAG DAFVGGFLSQLVSDKPLTEC IRAGHYAASIIIRRTGCTFP EKPDFH
Specificity	Recombinant fusion protein containing a sequence corresponding to amino acids 200-345 of human ADK (NP_001114.2).

ADDITIONAL INFORMATION

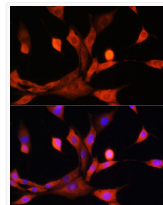
Note **STRICTLY FOR FURTHER SCIENTIFIC RESEARCH USE ONLY (RUO). MUST NOT TO BE USED IN DIAGNOSTIC OR THERAPEUTIC APPLICATIONS.**



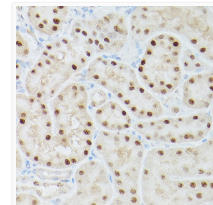
Immunofluorescence analysis of C6 cells using ADK Rabbit polyclonal antibody (STJ117217) at dilution of 1:100. Secondary antibody: Cy3 Goat Anti-Rabbit IgG (H+L) at 1:500 dilution. Blue: DAPI for nuclear staining.



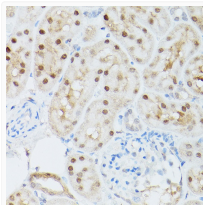
Immunofluorescence analysis of HeLa cells using ADK Rabbit polyclonal antibody (STJ117217) at dilution of 1:100. Secondary antibody: Cy3 Goat Anti-Rabbit IgG (H+L) at 1:500 dilution. Blue: DAPI for nuclear staining.



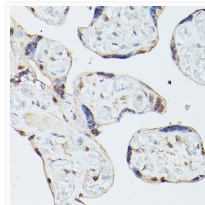
Immunofluorescence analysis of NIH/3T3 cells using ADK Rabbit polyclonal antibody (STJ117217) at dilution of 1:100. Secondary antibody: Cy3 Goat Anti-Rabbit IgG (H+L) at 1:500 dilution. Blue: DAPI for nuclear staining.



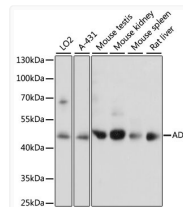
Immunohistochemistry analysis of ADK in paraffin-embedded rat kidney using ADK Rabbit polyclonal antibody (STJ117217) at dilution of 1:300 (40x lens). Perform high pressure antigen retrieval with 10 mM citrate buffer pH 6.0 before commencing with immunohistochemistry staining protocol.



Immunohistochemistry analysis of ADK in paraffin-embedded mouse kidney using ADK Rabbit polyclonal antibody (STJ117217) at dilution of 1:300 (40x lens). Perform high pressure antigen retrieval with 10 mM citrate buffer pH 6.0 before commencing with immunohistochemistry staining protocol.



Immunohistochemistry analysis of ADK in paraffin-embedded human placenta using ADK Rabbit polyclonal antibody (STJ117217) at dilution of 1:300 (40x lens). Perform high pressure antigen retrieval with 10 mM citrate buffer pH 6.0 before commencing with immunohistochemistry staining protocol.



Western blot analysis of various lysates using ADK Rabbit polyclonal antibody (STJ117217) at 1:1000 dilution. Secondary antibody: HRP Goat Anti-Rabbit IgG (H+L) (STJS000856) at 1:10000 dilution. Lysates/proteins: 25 Mu g per lane. Blocking buffer: 3% nonfat dry milk in TBST. Detection: ECL Basic Kit. Exposure time: 5s.