

Anti-ANKHD1 antibody (1620-1800) (STJ117102)

GENERAL INFORMATION

Product Type	Primary antibodies
Applications	WB/ELISA
Host / Source	Rabbit
Reactivity	Human

PRODUCT PROPERTIES

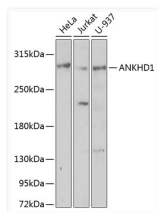
Clonality	Polyclonal
Concentration	Lot specific
Conjugation	Unconjugated
Purification	Affinity purification
Dilution Range	WB:1:500-1:2000 ELISA:Recommended starting concentration is 1 Mu g/mL. Please optimize the concentration based on your specific assay requirements.
Formulation	PBS with 0.02% Sodium Azide, 50% Glycerol, pH 7.3.
Isotype	IgG
Molecular Weight	Protein Mw: 269kDa Observed Mw: Refer to figures
Storage Instruction	Store at -20°C for up to 1 year from the date of receipt, and avoid repeat freeze-thaw cycles.

TARGET INFORMATION

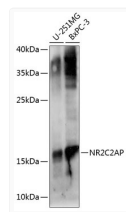
Gene ID	54882
Gene Symbol	ANKHD1
UniProt ID	ANKH1_HUMAN
Immunogen Region	1620-1800
Immunogen Sequence	VNSSKYPSELLHSQEEKTST ATSKTQTRLEGEVTPNSLST SYKTVSLPLSSPNIKLNLTS PKRGQKREEGWKEVVRRSKK LSVPASVSRIMGRGGCNIT AIQDVTGAHIDVDKQKDKNG ERMITIRGGTESTRYAVQLI NALIQDPAKELEDLIPKNHI RTPASTKSIHANFSSGVTG T A
Specificity	Recombinant fusion protein containing a sequence corresponding to amino acids 1620-1800 of human ANKHD1 (NP_060217.1).

ADDITIONAL INFORMATION

Note STRICTLY FOR FURTHER SCIENTIFIC RESEARCH USE ONLY (RUO). MUST NOT TO BE USED IN DIAGNOSTIC OR THERAPEUTIC APPLICATIONS.



Western blot analysis of extracts of various cell lines, using ANKHD1 antibody (STJ117102) at 1:1000 dilution. Secondary antibody: HRP Goat Anti-rabbit IgG (H+L) (STJS000856) at 1:10000 dilution. Lysates/proteins: 25 Mu g per lane. Blocking buffer: 3% non-fat dry milk in TBST. Detection: ECL Basic Kit. Exposure time: 30s.



Western blot analysis of extracts of various cell lines, using NR2C2AP antibody (STJ117102) at 1:1000 dilution. Secondary antibody: HRP Goat Anti-rabbit IgG (H+L) (STJS000856) at 1:10000 dilution. Lysates/proteins: 25 Mu g per lane. Blocking buffer: 3% non-fat dry milk in TBST. Detection: ECL Basic Kit. Exposure time: 90s.