

Anti-ATRNL1 antibody (53-160) (STJ117068)

GENERAL INFORMATION

Product Type	Primary antibodies
Applications	WB/ELISA
Host / Source	Rabbit
Reactivity	Human/Mouse

PRODUCT PROPERTIES

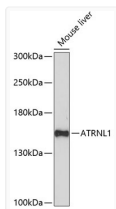
Clonality	Polyclonal
Concentration	Lot specific
Conjugation	Unconjugated
Purification	Affinity purification
Dilution Range	WB:1:500-1:2000 ELISA:Recommended starting concentration is 1 µg/mL. Please optimize the concentration based on your specific assay requirements.
Formulation	PBS with 0.01% Thimerosal, 50% Glycerol, pH 7.3.
Isotype	IgG
Molecular Weight	Protein Mw: 153kDa Observed Mw: 153kDa
Storage Instruction	Store at -20°C for up to 1 year from the date of receipt, and avoid repeat freeze-thaw cycles.

TARGET INFORMATION

Gene ID	26033
Gene Symbol	ATRNL1
UniProt ID	ATRNL1_HUMAN
Immunogen Region	53-160
Immunogen Sequence	LYAQVSQSKPCERTGSCFSG RCVNSTCLCDPGWVGDCQCH CQGRFKLTEPSGYLTDGPIN YKYTKCTWLIEGYPNVLR LRFNHFATECSWDHMYVYDG DSIYAPLI
Specificity	Recombinant fusion protein containing a sequence corresponding to amino acids 53-160 of human ATRNL1 (NP_001263211.1).

ADDITIONAL INFORMATION

Note STRICTLY FOR FURTHER SCIENTIFIC RESEARCH USE ONLY (RUO). MUST NOT TO BE USED IN DIAGNOSTIC OR THERAPEUTIC APPLICATIONS.



Western blot analysis of lysates from mouse liver, using ATRNL1 Rabbit polyclonal antibody (STJ117068) at 1:1000 dilution. Secondary antibody: HRP Goat Anti-Rabbit IgG (H+L) (STJS000856) at 1:10000 dilution. Lysates/proteins: 25 µg per lane. Blocking buffer: 3% nonfat dry milk in TBST. Detection: ECL Basic Kit. Exposure time: 90s.