

Anti-SWAP70 antibody (316-585) (STJ117057)

GENERAL INFORMATION

Product Type	Primary antibodies
Applications	WB/IHC-P/IF/ICC/ELISA
Host / Source	Rabbit
Reactivity	Human/Mouse/Rat

PRODUCT PROPERTIES

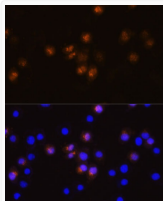
Clonality	Polyclonal
Concentration	Lot specific
Conjugation	Unconjugated
Purification	Affinity purification
Dilution Range	WB:1:500-1:2000 IHC-P:1:50-1:200 IF/ICC:1:50-1:200 ELISA:Recommended starting concentration is 1 µg/mL. Please optimize the concentration based on your specific assay requirements.
Formulation	PBS with 0.01% Thimerosal, 50% Glycerol, pH 7.3.
Isotype	IgG
Molecular Weight	Protein Mw: 69kDa Observed Mw: 69kDa
Storage Instruction	Store at -20°C for up to 1 year from the date of receipt, and avoid repeat freeze-thaw cycles.

TARGET INFORMATION

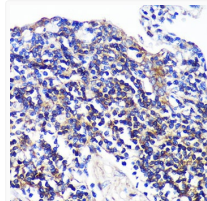
Gene ID	23075
Gene Symbol	SWAP70
UniProt ID	SWP70_HUMAN
Immunogen Region	316-585
Immunogen Sequence	HKEARQRKELRKKQLAEQE ELERQMKELQAANESKQQEL EAVRKKLEEASRAAEEEEKK RLQTQVELQARFSTELEREK LIRQQMEEQVAQKSSELEQY LQRVRELEDMYKLEALED ERQARQDEETVRKLRARLLLE EESSKRAELEKWHLEQQQAI QTTEAEKQELNQRVLKEQA LQEAAMEQLEQLERKQALE QYEEVKKKLEMATNKTKSWK DKVAHHEGLRIRLIEPGSKN
Specificity	Recombinant fusion protein containing a sequence corresponding to amino acids 316-585 of human SWAP70 (NP_055870.2).

ADDITIONAL INFORMATION

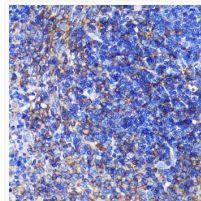
Note STRICTLY FOR FURTHER SCIENTIFIC RESEARCH USE ONLY (RUO). MUST NOT TO BE USED IN DIAGNOSTIC OR THERAPEUTIC APPLICATIONS.



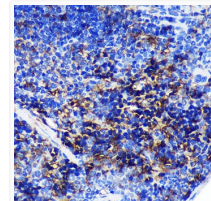
Immunofluorescence analysis of L929 cells using SWAP70 Rabbit polyclonal antibody (STJ117057) at dilution of 1:100. Secondary antibody: Cy3 Goat Anti-Rabbit IgG (H+L) at 1:500 dilution. Blue: DAPI for nuclear staining.



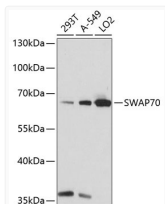
Immunohistochemistry analysis of SWAP70 in paraffin-embedded Human lung using SWAP70 Rabbit polyclonal antibody (STJ117057) at dilution of 1:100 (40x lens). Perform microwave antigen retrieval with 10 mM PBS buffer pH 7. 2 before commencing with immunohistochemistry staining protocol.



Immunohistochemistry analysis of SWAP70 in paraffin-embedded Rat spleen using SWAP70 Rabbit polyclonal antibody (STJ117057) at dilution of 1:100 (40x lens). Perform microwave antigen retrieval with 10 mM PBS buffer pH 7. 2 before commencing with immunohistochemistry staining protocol.



Immunohistochemistry analysis of SWAP70 in paraffin-embedded Mouse spleen using SWAP70 Rabbit polyclonal antibody (STJ117057) at dilution of 1:100 (40x lens). Perform microwave antigen retrieval with 10 mM PBS buffer pH 7. 2 before commencing with immunohistochemistry staining protocol.



Western blot analysis of various lysates using SWAP70 Rabbit polyclonal antibody (STJ117057) at 1:1000 dilution. Secondary antibody: HRP Goat Anti-Rabbit IgG (H+L) (STJS000856) at 1:10000 dilution. Lysates/proteins: 25 µg per lane. Blocking buffer: 3% nonfat dry milk in TBST. Detection: ECL Basic Kit. Exposure time: 5s.