

Anti-ARL6IP5 antibody (C-Term) (STJ117042)

GENERAL INFORMATION

Product Type	Primary antibodies
Applications	WB/ELISA
Host / Source	Rabbit
Reactivity	Mouse

PRODUCT PROPERTIES

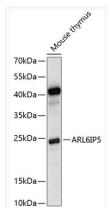
Clonality	Polyclonal
Concentration	Lot specific
Conjugation	Unconjugated
Purification	Affinity purification
Dilution Range	WB:1:500-1:2000 ELISA:Recommended starting concentration is 1 µg/mL. Please optimize the concentration based on your specific assay requirements.
Formulation	PBS with 0.01% Thimerosal, 50% Glycerol, pH 7.3.
Isotype	IgG
Molecular Weight	Protein Mw: 22kDa Observed Mw: 22kDa
Storage Instruction	Store at -20°C for up to 1 year from the date of receipt, and avoid repeat freeze-thaw cycles.

TARGET INFORMATION

Gene ID	10550
Gene Symbol	ARL6IP5
UniProt ID	PRAF3_HUMAN
Immunogen Region	C-Term
Immunogen Sequence	TFVMVVMLASYFLISMFGGV MVFVFGITFPLLLMFIHASL RLRNLKNKLENKMEGIGLKR TPMGIVLDALEQQEEGINRL TDYISKVKE
Specificity	A synthetic peptide corresponding to a sequence within amino acids 100 to the C-terminus of human ARL6IP5 (NP_006398.1).

ADDITIONAL INFORMATION

Note STRICTLY FOR FURTHER SCIENTIFIC RESEARCH USE ONLY (RUO). MUST NOT TO BE USED IN DIAGNOSTIC OR THERAPEUTIC APPLICATIONS.



Western blot analysis of lysates from mouse thymus, using ARL6IP5 Rabbit polyclonal antibody (STJ117042) at 1:1000 dilution. Secondary antibody: HRP Goat Anti-Rabbit IgG (H+L) (STJS000856) at 1:10000 dilution. Lysates/proteins: 25 µg per lane. Blocking buffer: 3% nonfat dry milk in TBST. Detection: ECL Basic Kit. Exposure time: 5s.