

## Anti-TFDP1 antibody (1-290) (STJ116989)

### GENERAL INFORMATION

Product Type	Primary antibodies
Applications	IHC-P/ELISA
Host / Source	Rabbit
Reactivity	Mouse/Rat

### PRODUCT PROPERTIES

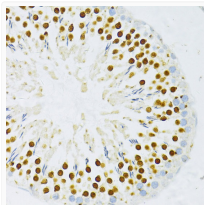
Clonality	Polyclonal
Concentration	Lot specific
Conjugation	Unconjugated
Purification	Affinity purification
Dilution Range	IHC-P:1:50-1:200 ELISA:Recommended starting concentration is 1 Mu g/mL. Please optimize the concentration based on your specific assay requirements.
Formulation	PBS with 0.02% Sodium Azide, 50% Glycerol, pH 7.3.
Isotype	IgG
Molecular Weight	Protein Mw: 45kDa Observed Mw: Refer to figures
Storage Instruction	Store at -20°C for up to 1 year from the date of receipt, and avoid repeat freeze-thaw cycles.

### TARGET INFORMATION

Gene ID	<a href="#">7027</a>
Gene Symbol	<a href="#">TFDP1</a>
UniProt ID	<a href="#">TFDP1_HUMAN</a>
Immunogen Region	1-290
Immunogen Sequence	MAKDAGLIEANGELKVFIDQ NLSPGKGVVSLVAVHPSTVN PLGKQLLPKTFGQSNVNIAQ QVVIGTPQRPAASNTLVVGS PHTPSTHFASQNPSSSPW SAGKRNRKGEKNGKGLRHFS MKVCEKVRKGTTSYNEVAD ELVAEFSAADNHILPNESAY DQKNIRRRVYDALNVLMMN IISKEKKEIKWIGLPTNSAQ ECQNLEVERQRRLERIKQKQ SQLQELILQQIAFKNLVQR
Specificity	Recombinant fusion protein containing a sequence corresponding to amino acids 1-290 of human DP1/DP1/TFDP1 (NP_009042.1).

### ADDITIONAL INFORMATION

Note	STRICTLY FOR FURTHER SCIENTIFIC RESEARCH USE ONLY (RUO). MUST NOT TO BE USED IN DIAGNOSTIC OR THERAPEUTIC APPLICATIONS.
------	---



Immunohistochemistry analysis of paraffin-embedded rat testis using DP1/DP1/TFDP1 antibody (STJ116989) at dilution of 1:100 (40x lens). Perform microwave antigen retrieval with 10 mM PBS buffer pH 7.2 before commencing with immunohistochemistry staining protocol.