

Anti-S100P antibody (1-95) (STJ116980)

GENERAL INFORMATION

| | |
|---------------|--------------------------|
| Product Type | Primary antibodies |
| Applications | WB/IHC-P/IF/ICC/IP/ELISA |
| Host / Source | Rabbit |
| Reactivity | Human |

PRODUCT PROPERTIES

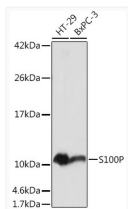
| | |
|---------------------|--|
| Clonality | Polyclonal |
| Concentration | Lot specific |
| Conjugation | Unconjugated |
| Purification | Affinity purification |
| Dilution Range | WB:1:500-1:1000 IHC-P:1:100-1:200 IF/ICC:1:50-1:200 IP:0.5 Mu g-4 Mu g antibody for 200 Mu g-400 Mu g extracts of whole cells |
| Formulation | PBS with 0.05% Proclin300, 50% Glycerol, pH7.3. |
| Isotype | IgG |
| Molecular Weight | Protein Mw: 10kDa Observed Mw: 10kDa |
| Storage Instruction | Store at -20°C for up to 1 year from the date of receipt, and avoid repeat freeze-thaw cycles. |

TARGET INFORMATION

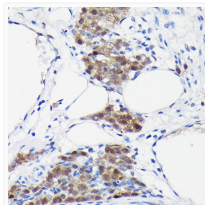
| | |
|--------------------|---|
| Gene ID | 6286 |
| Gene Symbol | S100P |
| UniProt ID | S100P_HUMAN |
| Immunogen Region | 1-95 |
| Immunogen Sequence | MTELETAMGMIIIDVFSRYSG SEGSTQTLTKGELKVLMEKE LPGFLQSGKDKDAVDKLLKD LDANGDAQVDFSEFIVFVAA ITSACHKYFEKAGLK |
| Specificity | A synthetic peptide corresponding to a sequence within amino acids 1-95 of human S100P (NP_005971.1). |

ADDITIONAL INFORMATION

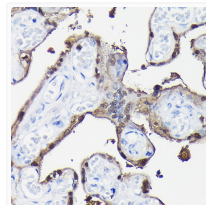
Note **STRICTLY FOR FURTHER SCIENTIFIC RESEARCH USE ONLY (RUO). MUST NOT TO BE USED IN DIAGNOSTIC OR THERAPEUTIC APPLICATIONS.**



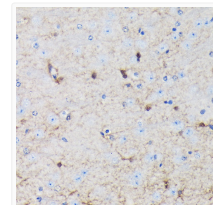
Western blot analysis of various lysates using S100P Rabbit pAb (STJ116980) at 1:1000 dilution.
 Secondary antibody: HRP-conjugated Goat anti-Rabbit IgG (H+L) (STJS000856) at 1:10000 dilution.
 Lysates/proteins: 25 Mu g per lane.
 Blocking buffer: 3% nonfat dry milk in TBST.
 Detection: ECL Basic Kit
 Exposure time: 5s.



Immunohistochemistry analysis of paraffin-embedded Human placenta using S100P Rabbit pAb (STJ116980) at dilution of 1:100 (40x lens). High pressure antigen retrieval performed with 0.01M Citrate Buffer (pH 6.0) prior to immunohistochemistry staining.



Immunofluorescence analysis of paraffin-embedded human placenta using S100P Rabbit pAb (STJ116980) at dilution of 1:100 (40x lens). Secondary antibody: Cy3-conjugated Goat anti-Rabbit IgG (H+L) (STJS001166) at 1:500 dilution. Blue: DAPI for nuclear staining.



Immunoprecipitation analysis of 300 Mu g extracts of HT-29 cells using 3 Mu g S100P antibody (STJ116980). Western blot was performed from the immunoprecipitate using S100P antibody (STJ116980) at a dilution of 1:1000.