

Anti-RBBP6 antibody (1240-1355) (STJ116976)

GENERAL INFORMATION

Product Type	Primary antibodies
Applications	WB/ELISA
Host / Source	Rabbit
Reactivity	Human/Mouse/Rat

PRODUCT PROPERTIES

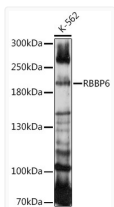
Clonality	Polyclonal
Concentration	Lot specific
Conjugation	Unconjugated
Purification	Affinity purification
Dilution Range	WB:1:500-1:1000 ELISA:Recommended starting concentration is 1 Mu g/mL. Please optimize the concentration based on your specific assay requirements.
Formulation	PBS with 0.05% Proclin300, 50% Glycerol, pH 7.3.
Isotype	IgG
Molecular Weight	Protein Mw: 202kDa Observed Mw: 210kDa
Storage Instruction	Store at -20°C for up to 1 year from the date of receipt, and avoid repeat freeze-thaw cycles.

TARGET INFORMATION

Gene ID	5930
Gene Symbol	RBBP6
UniProt ID	RBBP6_HUMAN
Immunogen Region	1240-1355
Immunogen Sequence	SKVKQEKVKGKVRKVTGTE GSSSTLVDTSTSSSTGGSPV RKSEEKTDTKRTVIKTMEEY NNDNTAPAEDVIIMIQVPQS KWDKDDFESEEDVKSTQPI SSVGKPPASVIKRVSTK
Specificity	Recombinant fusion protein containing a sequence corresponding to amino acids 1240-1355 of human RBBP6 (NP_008841.2).

ADDITIONAL INFORMATION

Note STRICTLY FOR FURTHER SCIENTIFIC RESEARCH USE ONLY (RUO). MUST NOT TO BE USED IN DIAGNOSTIC OR THERAPEUTIC APPLICATIONS.



Western blot analysis of extracts of K-562 cells, using RBBP6 antibody (STJ116976) at 1:1000 dilution. Secondary antibody: HRP Goat Anti-Rabbit IgG (H+L) (STJS000856) at 1:10000 dilution. Lysates/proteins: 25 Mu g per lane. Blocking buffer: 3% nonfat dry milk in TBST. Detection: ECL Enhanced Kit. Exposure time: 90s.