

## Anti-PTPRN2 antibody (22-242) (STJ116974)

### GENERAL INFORMATION

Product Type	Primary antibodies
Applications	WB/IHC-P/ELISA
Host / Source	Rabbit
Reactivity	Human/Mouse/Rat

### PRODUCT PROPERTIES

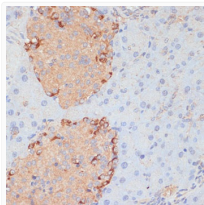
Clonality	Polyclonal
Concentration	Lot specific
Conjugation	Unconjugated
Purification	Affinity purification
Dilution Range	WB:1:500-1:2000 IHC-P:1:50-1:100 ELISA:Recommended starting concentration is 1 Mu g/mL. Please optimize the concentration based on your specific assay requirements.
Formulation	PBS with 0.09% Sodium Azide, 50% Glycerol, pH7.3.
Isotype	IgG
Molecular Weight	Protein Mw: 111kDa Observed Mw: 111kDa
Storage Instruction	Store at -20°C for up to 1 year from the date of receipt, and avoid repeat freeze-thaw cycles.

### TARGET INFORMATION

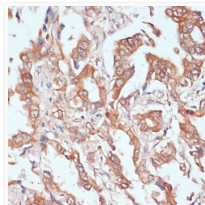
Gene ID	<a href="#">5799</a>
Gene Symbol	<a href="#">PTPRN2</a>
UniProt ID	<a href="#">PTPR2_HUMAN</a>
Immunogen Region	22-242
Immunogen Sequence	AAPSSVPRGRQLPGRIGCLL EEGLCGASEACVNDGVFGRG QKVPAMDFYRYEVSPVALQR LRVALQKLSGTGFTWQDDYT QYVMDQELADLPKTYLRRPE ASSPARPSKHSVGSERRYSR EGGAALANALRRHLPLFLEAL SQAPASDVLARTHTAQDRPP AEGDDRFSESILTYVAHTSA LTYPGSGRTQLREDLLPRTL GQLQPDELSPKVDSGVDRHH L
Specificity	Recombinant fusion protein containing a sequence corresponding to amino acids 22-242 of human PTPRN2 (NP_570858.2).

### ADDITIONAL INFORMATION

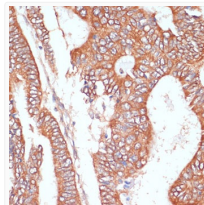
Note **STRICTLY FOR FURTHER SCIENTIFIC RESEARCH USE ONLY (RUO). MUST NOT TO BE USED IN DIAGNOSTIC OR THERAPEUTIC APPLICATIONS.**



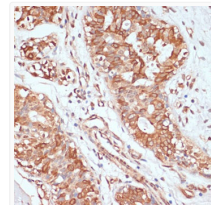
Immunohistochemistry analysis of PTPRN2 in paraffin-embedded mouse pancreas using PTPRN2 Rabbit polyclonal antibody (STJ116974) at dilution of 1:100 (40x lens). Perform microwave antigen retrieval with 10 mM PBS buffer pH 7. 2 before commencing with immunohistochemistry staining protocol.



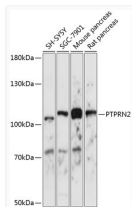
Immunohistochemistry analysis of PTPRN2 in paraffin-embedded human lung cancer using PTPRN2 Rabbit polyclonal antibody (STJ116974) at dilution of 1:100 (40x lens). Perform microwave antigen retrieval with 10 mM PBS buffer pH 7. 2 before commencing with immunohistochemistry staining protocol.



Immunohistochemistry analysis of PTPRN2 in paraffin-embedded human colon carcinoma using PTPRN2 Rabbit polyclonal antibody (STJ116974) at dilution of 1:100 (40x lens). Perform microwave antigen retrieval with 10 mM PBS buffer pH 7. 2 before commencing with immunohistochemistry staining protocol.



Immunohistochemistry analysis of PTPRN2 in paraffin-embedded human mammary cancer using PTPRN2 Rabbit polyclonal antibody (STJ116974) at dilution of 1:100 (40x lens). Perform microwave antigen retrieval with 10 mM PBS buffer pH 7. 2 before commencing with immunohistochemistry staining protocol.



Western blot analysis of various lysates using PTPRN2 Rabbit polyclonal antibody (STJ116974) at 1:1000 dilution. Secondary antibody: HRP Goat Anti-Rabbit IgG (H+L) (STJS000856) at 1:10000 dilution. Lysates/proteins: 25 Mu g per lane. Blocking buffer: 3% nonfat dry milk in TBST. Detection: ECL Basic Kit. Exposure time: 5s.