

Anti-PTCH1 antibody (770-970) (STJ116972)

GENERAL INFORMATION

Product Type	Primary antibodies
Applications	WB/IF/ICC/ELISA
Host / Source	Rabbit
Reactivity	Mouse/Rat

PRODUCT PROPERTIES

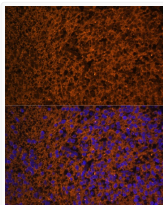
Clonality	Polyclonal
Concentration	Lot specific
Conjugation	Unconjugated
Purification	Affinity purification
Dilution Range	WB:1:500-1:1000 IF/CC:1:50-1:200 ELISA:Recommended starting concentration is 1 Mu g/mL. Please optimize the concentration based on your specific assay requirements.
Formulation	PBS with 0.01% Thimerosal, 50% Glycerol, pH 7.3.
Isotype	IgG
Molecular Weight	Protein Mw: 161kDa Observed Mw: 160kDa
Storage Instruction	Store at -20°C for up to 1 year from the date of receipt, and avoid repeat freeze-thaw cycles.

TARGET INFORMATION

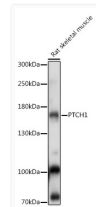
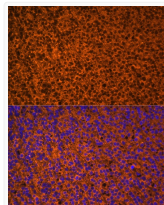
Gene ID	5727
Gene Symbol	PTCH1
UniProt ID	PTC1_HUMAN
Immunogen Region	770-970
Immunogen Sequence	RVRDGLDLTDIVPRETREYD FIAAQFKYFSFYNNMYIVTQK ADYPNIQHLLYDLHRSFSNV KYVMLEENKQLPKMWLHYFR DWLQGLQDAFSDWETGKIM PNNYKNGSDDGVLAYKLLVQ TGSRDKPIDISQLTKQRLVD ADGIINPSAFYIYLTAWVSN DPVAYAASQANIRPHRPEVV HDKADYMPETRLRIPAAEPI E
Specificity	Recombinant fusion protein containing a sequence corresponding to amino acids 770-970 of human PTCH1 (NP_000255.2).

ADDITIONAL INFORMATION

Note STRICTLY FOR FURTHER SCIENTIFIC RESEARCH USE ONLY (RUO). MUST NOT TO BE USED IN DIAGNOSTIC OR THERAPEUTIC APPLICATIONS.



Immunofluorescence analysis of paraffin-embedded mouse embryos using PTCH1 Rabbit polyclonal antibody (STJ116972) at dilution of 1:100. Secondary antibody: Cy3 Goat Anti-Rabbit IgG (H+L) at 1:500 dilution. Blue: DAPI for nuclear staining.



Western blot analysis of lysates from Rat skeletal muscle, using PTCH1 Rabbit polyclonal antibody (STJ116972) at 1:10000 dilution. Secondary antibody: HRP Goat Anti-Rabbit IgG (H+L) (STJS000856) at 1:10000 dilution. Lysates/proteins: 25 Mu g per lane. Blocking buffer: 3% nonfat dry milk in TBST. Detection: ECL Basic Kit. Exposure time: 10s.