

Anti-ALDH6A1 antibody (326-535) (STJ116950)

GENERAL INFORMATION

Product Type	Primary antibodies
Applications	IHC-P/IF/ICC/ELISA
Host / Source	Rabbit
Reactivity	Human/Mouse/Rat

PRODUCT PROPERTIES

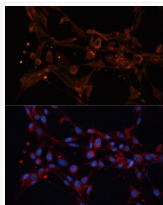
Clonality	Polyclonal
Concentration	Lot specific
Conjugation	Unconjugated
Purification	Affinity purification
Dilution Range	IHC-P:1:50-1:200 IF/CC:1:50-1:200 ELISA:Recommended starting concentration is 1 µg/mL. Please optimize the concentration based on your specific assay requirements.
Formulation	PBS with 0.01% Thimerosal, 50% Glycerol, pH 7.3.
Isotype	IgG
Molecular Weight	Protein Mw: 58kDa Observed Mw:
Storage Instruction	Store at -20°C for up to 1 year from the date of receipt, and avoid repeat freeze-thaw cycles.

TARGET INFORMATION

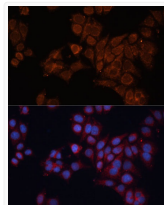
Gene ID	4329
Gene Symbol	ALDH6A1
UniProt ID	MMSA_HUMAN
Immunogen Region	326-535
Immunogen Sequence	VGEAKKWLPELVEHAKNLRV NAGDQPGADLGPLITPQAKE RVCNLDISGKKEGASILLDG RKIKVKGYENGFVGPPTIIS NVKPNMTCYKEEIFGPVLVV LETETLDEAIQIVNNPYGN GTAIFTTNGATARKY AHLVD VQGVGVNVPVPLPMFSFT GSRSSFRGDTNIFYGKQGIQF YTQLKTITSQWKEEDATLSS PAVVMPTMGR
Specificity	Recombinant fusion protein containing a sequence corresponding to amino acids 326-535 of human ALDH6A1 (NP_005580.1).

ADDITIONAL INFORMATION

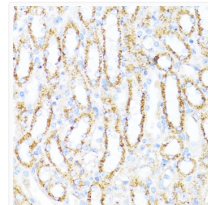
Note **STRICTLY FOR FURTHER SCIENTIFIC RESEARCH USE ONLY (RUO). MUST NOT TO BE USED IN DIAGNOSTIC OR THERAPEUTIC APPLICATIONS.**



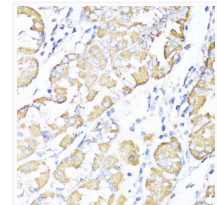
Immunofluorescence analysis of NIH-3T3 cells using ALDH6A1 Rabbit polyclonal antibody (STJ116950) at dilution of 1:100 (40x lens). Secondary antibody: Cy3 Goat Anti-Rabbit IgG (H+L) at 1:500 dilution. Blue: DAPI for nuclear staining.



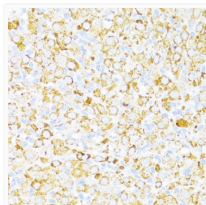
Immunofluorescence analysis of HeLa cells using ALDH6A1 Rabbit polyclonal antibody (STJ116950) at dilution of 1:100 (40x lens). Secondary antibody: Cy3 Goat Anti-Rabbit IgG (H+L) at 1:500 dilution. Blue: DAPI for nuclear staining.



Immunohistochemistry analysis of ALDH6A1 in paraffin-embedded mouse kidney using ALDH6A1 Rabbit polyclonal antibody (STJ116950) at dilution of 1:100 (40x lens). Perform microwave antigen retrieval with 10 mM PBS buffer pH 7.2 before commencing with immunohistochemistry staining protocol.



Immunohistochemistry analysis of ALDH6A1 in paraffin-embedded human stomach using ALDH6A1 Rabbit polyclonal antibody (STJ116950) at dilution of 1:100 (40x lens). Perform microwave antigen retrieval with 10 mM PBS buffer pH 7.2 before commencing with immunohistochemistry staining protocol.



Immunohistochemistry analysis of ALDH6A1 in paraffin-embedded rat ovary using ALDH6A1 Rabbit polyclonal antibody (STJ116950) at dilution of 1:100 (40x lens). Perform microwave antigen retrieval with 10 mM PBS buffer pH 7.2 before commencing with immunohistochemistry staining protocol.