

Anti-CSNK2B antibody (1-215) (STJ116922)

GENERAL INFORMATION

Product Type	Primary antibodies
Applications	WB/IHC-P/IF/ICC/ELISA
Host / Source	Rabbit
Reactivity	Human/Mouse/Rat

PRODUCT PROPERTIES

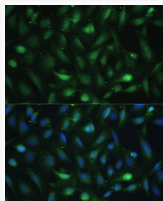
Clonality	Polyclonal
Concentration	Lot specific
Conjugation	Unconjugated
Purification	Affinity purification
Dilution Range	WB:1:500-1:2000 IHC-P:1:50-1:100 IF/CC:1:50-1:100 ELISA:Recommended starting concentration is 1 Mu g/mL. Please optimize the concentration based on your specific assay requirements.
Formulation	PBS with 0.02% Sodium Azide, 50% Glycerol, pH 7.3.
Isotype	IgG
Molecular Weight	Protein Mw: 25kDa Observed Mw: 25kDa
Storage Instruction	Store at -20°C for up to 1 year from the date of receipt, and avoid repeat freeze-thaw cycles.

TARGET INFORMATION

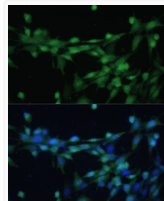
Gene ID	1460
Gene Symbol	CSNK2B
UniProt ID	CSK2B_HUMAN
Immunogen Region	1-215
Immunogen Sequence	MSSSEEVSWISWFCGLRGNE FFCEVDEVDYIQDKFNLTGLN EQVPHYRQALDMILDLEPDE ELEDNPNQSDLIEQAEMLY GLIHARYILTNRGIAQMLEK YQQGDFGYCPRVYCENQPML PIGLSDIPGEAMVKLYCPKC MDVYTPKSSRHHTDGYFG TGFPHMLFMVHPEYRPKRPA NQFVPRLYGFKIHPMAYQLQ LQAASNFKSPVKTIR
Specificity	Recombinant fusion protein containing a sequence corresponding to amino acids 1-215 of human Casein Kinase 2 beta (Casein Kinase 2 beta (CSNK2B)) (NP_001311.3).

ADDITIONAL INFORMATION

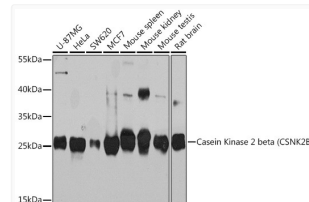
Note **STRICTLY FOR FURTHER SCIENTIFIC RESEARCH USE ONLY (RUO). MUST NOT TO BE USED IN DIAGNOSTIC OR THERAPEUTIC APPLICATIONS.**



Immunofluorescence analysis of U-2 OS cells using Casein Kinase 2 beta (Casein Kinase 2 beta (CSNK2B)) Polyclonal Antibody (STJ116922) at dilution of 1:100 (40x lens). Blue: DAPI for nuclear staining.



Immunofluorescence analysis of NIH-3T3 cells using Casein Kinase 2 beta (Casein Kinase 2 beta (CSNK2B)) Polyclonal Antibody (STJ116922) at dilution of 1:100 (40x lens). Blue: DAPI for nuclear staining.



Western blot analysis of extracts of various cell lines, using Casein Kinase 2 beta (Casein Kinase 2 beta (CSNK2B)) Rabbit polyclonal antibody (STJ116922) at 1:1000 dilution. Secondary antibody: HRP Goat Anti-Rabbit IgG (H+L) (STJS000856) at 1:10000 dilution. Lysates/proteins: 25 Mu g per lane. Blocking buffer: 3% nonfat dry milk in TBST. Detection: ECL Basic Kit. Exposure time: 30s.