

Anti-CALM1 antibody (70-149) (STJ116911)

GENERAL INFORMATION

Product Type	Primary antibodies
Applications	IHC-P/IF/ICC/ELISA
Host / Source	Rabbit
Reactivity	Human/Mouse/Rat

PRODUCT PROPERTIES

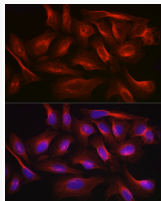
Clonality	Polyclonal
Concentration	Lot specific
Conjugation	Unconjugated
Purification	Affinity purification
Dilution Range	IHC-P:1:50-1:200 IF/CC:1:50-1:200 ELISA:Recommended starting concentration is 1 µg/mL. Please optimize the concentration based on your specific assay requirements.
Formulation	PBS with 0.09% Sodium Azide, 50% Glycerol, pH 7.3.
Isotype	IgG
Molecular Weight	Protein Mw: 16kDa Observed Mw: Refer to figures
Storage Instruction	Store at -20°C for up to 1 year from the date of receipt, and avoid repeat freeze-thaw cycles.

TARGET INFORMATION

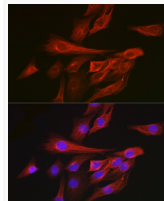
Gene ID	801/805/808 801/805/808 CALM2 CALM1 CALM2_HUMAN CALM1_HUMAN CALM3_HUMAN
Immunogen Region	70-149
Immunogen Sequence	LTMARKMKDSDSEEEIREA FRVFDKDGNGYISAAELRHV MTNLGKLTDEEVDEMIREA DIDGGQVNYEEFVQMMTAK
Specificity	A synthetic peptide corresponding to a sequence within amino acids 70-149 of human Calmodulin 1/2/3 (NP_008819.1).

ADDITIONAL INFORMATION

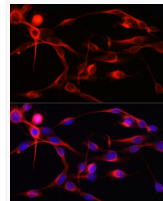
Note **STRICTLY FOR FURTHER SCIENTIFIC RESEARCH USE ONLY (RUO). MUST NOT TO BE USED IN DIAGNOSTIC OR THERAPEUTIC APPLICATIONS.**



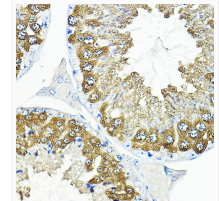
Immunofluorescence analysis of U2OS cells using Calmodulin 1/2/3 Rabbit polyclonal antibody (STJ116911) at dilution of 1:100 (40x lens). Blue: DAPI for nuclear staining.



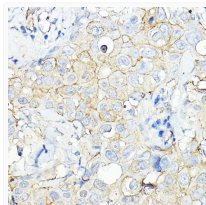
Immunofluorescence analysis of NIH/3T3 cells using Calmodulin 1/2/3 Rabbit polyclonal antibody (STJ116911) at dilution of 1:100 (40x lens). Blue: DAPI for nuclear staining.



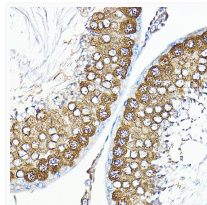
Immunofluorescence analysis of C6 cells using Calmodulin 1/2/3 Rabbit polyclonal antibody (STJ116911) at dilution of 1:100 (40x lens). Blue: DAPI for nuclear staining.



Immunohistochemistry analysis of paraffin-embedded mouse testis using Calmodulin 1/2/3 Rabbit polyclonal antibody (STJ116911) at dilution of 1:100 (40x lens). Perform high pressure antigen retrieval with 10 mM citrate buffer pH 6.0 before commencing with immunohistochemistry staining protocol.



Immunohistochemistry analysis of paraffin-embedded human breast cancer using Calmodulin 1/2/3 Rabbit polyclonal antibody (STJ116911) at dilution of 1:100 (40x lens). Perform high pressure antigen retrieval with 10 mM citrate buffer pH 6.0 before commencing with immunohistochemistry staining protocol.



Immunohistochemistry analysis of paraffin-embedded rat testis using Calmodulin 1/2/3 Rabbit polyclonal antibody (STJ116911) at dilution of 1:100 (40x lens). Perform high pressure antigen retrieval with 10 mM citrate buffer pH 6.0 before commencing with immunohistochemistry staining protocol.