

Anti-CA5A antibody (39-305) (STJ116909)

GENERAL INFORMATION

Product Type	Primary antibodies
Applications	WB/IF/ICC/ELISA
Host / Source	Rabbit
Reactivity	Human/Mouse/Rat

PRODUCT PROPERTIES

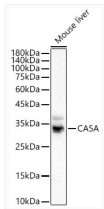
Clonality	Polyclonal
Concentration	Lot specific
Conjugation	Unconjugated
Purification	Affinity purification
Dilution Range	WB:1:500-1:2000 IF/CC:1:50-1:200 ELISA:Recommended starting concentration is 1 Mu g/mL. Please optimize the concentration based on your specific assay requirements.
Formulation	PBS with 0.05% Proclin300, 50% Glycerol, pH 7.3.
Isotype	IgG
Molecular Weight	Protein Mw: 35kDa Observed Mw: 36kDa
Storage Instruction	Store at -20°C for up to 1 year from the date of receipt, and avoid repeat freeze-thaw cycles.

TARGET INFORMATION

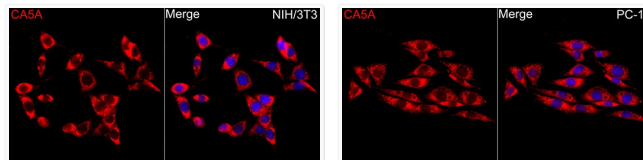
Gene ID	763
Gene Symbol	CA5A
UniProt ID	CAH5A_HUMAN
Immunogen Region	39-305
Immunogen Sequence	CAWQTSNNTLHPLWTPVSV PGGTRQSPINIQWRDSVYDP QLKPLRVSYEAASCLYIWN GYLFQVEFDDATEASGISGG PLENHYRLKQFHFHWGAVNE GGSEHTVDGHAYPAELHLVH WNSVKYQNYKEAVVGENGLA VIGVFLKLGAAHQTLQRLVD ILPEIKHKDARAAMRPFDP S TLLPTCWDYWTYAGSLTTPP LTESVTWIIQKEPVEVAPSQ LSAFRTLLFSALGEEEEKMM
Specificity	Recombinant fusion protein containing a sequence corresponding to amino acids 39-305 of human CA5A (NP_001730.1).

ADDITIONAL INFORMATION

Note STRICTLY FOR FURTHER SCIENTIFIC RESEARCH USE ONLY (RUO). MUST NOT TO BE USED IN DIAGNOSTIC OR THERAPEUTIC APPLICATIONS.



Western blot analysis of lysates from mouse liver using CA5A rabbit polyclonal antibody (STJ116909) at 1:1000 dilution. Secondary antibody:HRP Goat Anti-rabbit IgG (H+L) (STJS000856) at 1:10000 dilution. Lysates/proteins: 25 Mu g per lane. Blocking buffer: 3% non-fat dry milk in TBST. Detection:ECL Basic Kit. Exposure time:5s.



Immunofluorescence analysis of NIH/3T3 cells using CA5A rabbit polyclonal antibody (STJ116909) at dilution of 1:100 (40x lens). Secondary antibody: Cy3 Goat Anti-rabbit IgG (H+L) at 1:500 dilution. Blue: DAPI for nuclear staining.

Immunofluorescence analysis of PC-12 cells using CA5A rabbit polyclonal antibody (STJ116909) at dilution of 1:100 (40x lens). Secondary antibody: Cy3 Goat Anti-rabbit IgG (H+L) at 1:500 dilution. Blue: DAPI for nuclear staining.