

Anti-ATP6V1A antibody (500-600) (STJ116907)

GENERAL INFORMATION

Product Type	Primary antibodies
Applications	WB/ELISA
Host / Source	Rabbit
Reactivity	Mouse

PRODUCT PROPERTIES

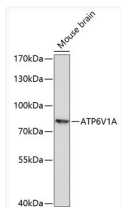
Clonality	Polyclonal
Concentration	Lot specific
Conjugation	Unconjugated
Purification	Affinity purification
Dilution Range	WB:1:500-1:2000 ELISA:Recommended starting concentration is 1 µg/mL. Please optimize the concentration based on your specific assay requirements.
Formulation	PBS with 0.01% Thimerosal, 50% Glycerol, pH 7.3.
Isotype	IgG
Molecular Weight	Protein Mw: 68kDa Observed Mw: 74kDa
Storage Instruction	Store at -20°C for up to 1 year from the date of receipt, and avoid repeat freeze-thaw cycles.

TARGET INFORMATION

Gene ID	523
Gene Symbol	ATP6V1A
UniProt ID	VATA_HUMAN
Immunogen Region	500-600
Immunogen Sequence	SLAETDKITLEVAKLIKDDF LQQNGYTPYDRFCPPFYKTVG MLSNMIAFYDMARRAVETTA QSDNKITWSIIREHMGDILY KLSSMKFKDPLKDGEAIKIS D
Specificity	A synthetic peptide corresponding to a sequence within amino acids 500-600 of human ATP6V1A (NP_001681.2).

ADDITIONAL INFORMATION

Note STRICTLY FOR FURTHER SCIENTIFIC RESEARCH USE ONLY (RUO). MUST NOT TO BE USED IN DIAGNOSTIC OR THERAPEUTIC APPLICATIONS.



Western blot analysis of lysates from mouse brain, using ATP6V1A Rabbit polyclonal antibody (STJ116907) at 1:1000 dilution. Secondary antibody: HRP Goat Anti-Rabbit IgG (H+L) (STJS000856) at 1:10000 dilution. Lysates/proteins: 25 µg per lane. Blocking buffer: 3% nonfat dry milk in TBST. Detection: ECL Enhanced Kit. Exposure time: 3min.