

## Anti-ABCB7 antibody (503-753) (STJ116899)

### GENERAL INFORMATION

Product Type	Primary antibodies
Applications	WB/IHC-P/IF/ICC/ELISA
Host / Source	Rabbit
Reactivity	Human/Mouse/Rat

### PRODUCT PROPERTIES

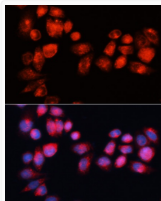
Clonality	Polyclonal
Concentration	Lot specific
Conjugation	Unconjugated
Purification	Affinity purification
Dilution Range	WB:1:500-1:2000 IHC-P:1:50-1:200 IF/ICC:1:50-1:200 ELISA:Recommended starting concentration is 1 Mu g/mL. Please optimize the concentration based on your specific assay requirements.
Formulation	PBS with 0.01% Thimerosal, 50% Glycerol, pH 7.3.
Isotype	IgG
Molecular Weight	Protein Mw: 83kDa Observed Mw: 83kDa
Storage Instruction	Store at -20°C for up to 1 year from the date of receipt, and avoid repeat freeze-thaw cycles.

### TARGET INFORMATION

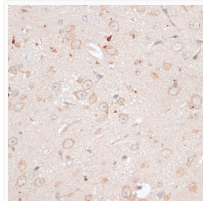
Gene ID	<a href="#">22</a>
Gene Symbol	<a href="#">ABCB7</a>
UniProt ID	<a href="#">ABCB7_HUMAN</a>
Immunogen Region	503-753
Immunogen Sequence	AIVGGSGSGKSTIVRLLFRF YEPQKGSYLAGQNIQDVSL ESLRRAVGVVQDAVLFHNT IYYNLLYGNISASPEEVYAV AKLAGLHDAILRMPHGYDTQ VGERGLKLSGGEKQRVAIAR AILKDPVILYDEATSSLDS ITEETILGAMKDVVKHRTSI FIAHRLSTVVDADIIVLDQ GKVAERGTHHGLLANPHSIY SEMWHTQSSRVQNHNDNPKWE AKKENISKEEERKKLQEEI
Specificity	Recombinant fusion protein containing a sequence corresponding to amino acids 503-753 of human ABCB7 (NP_004290.2).

### ADDITIONAL INFORMATION

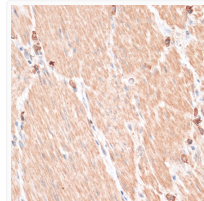
Note STRICTLY FOR FURTHER SCIENTIFIC RESEARCH USE ONLY (RUO). MUST NOT TO BE USED IN DIAGNOSTIC OR THERAPEUTIC APPLICATIONS.



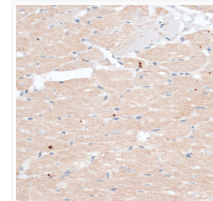
Immunofluorescence analysis of HeLa cells using ABCB7 Rabbit polyclonal antibody (STJ116899) at dilution of 1:100 (40x lens). Secondary antibody: Cy3 Goat Anti-Rabbit IgG (H+L) at 1:500 dilution. Blue: DAPI for nuclear staining.



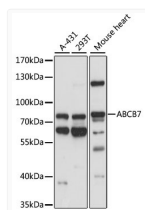
Immunohistochemistry analysis of ABCB7 in paraffin-embedded mouse brain using ABCB7 Rabbit polyclonal antibody (STJ116899) at dilution of 1:100 (40x lens). Perform microwave antigen retrieval with 10 mM PBS buffer pH 7. 2 before commencing with immunohistochemistry staining protocol.



Immunohistochemistry analysis of ABCB7 in paraffin-embedded human gastric cancer using ABCB7 Rabbit polyclonal antibody (STJ116899) at dilution of 1:100 (40x lens). Perform microwave antigen retrieval with 10 mM PBS buffer pH 7. 2 before commencing with immunohistochemistry staining protocol.



Immunohistochemistry analysis of ABCB7 in paraffin-embedded rat heart using ABCB7 Rabbit polyclonal antibody (STJ116899) at dilution of 1:100 (40x lens). Perform microwave antigen retrieval with 10 mM PBS buffer pH 7. 2 before commencing with immunohistochemistry staining protocol.



Western blot analysis of various lysates using ABCB7 Rabbit polyclonal antibody (STJ116899) at 1:1000 dilution. Secondary antibody: HRP Goat Anti-Rabbit IgG (H+L) (STJS000856) at 1:10000 dilution. Lysates/proteins: 25 Mu g per lane. Blocking buffer: 3% nonfat dry milk in TBST. Detection: ECL Basic Kit. Exposure time: 10s.