

Anti-GFAP antibody (350-432) (STJ116876)

GENERAL INFORMATION

Product Type	Primary antibodies
Applications	WB/IHC-P/IF/ICC/ELISA
Host / Source	Rabbit
Reactivity	Human/Mouse/Rat

PRODUCT PROPERTIES

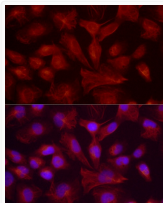
Clonality	Polyclonal
Concentration	Lot specific
Conjugation	Unconjugated
Purification	Affinity purification
Dilution Range	WB:1:500-1:1000 IHC-P:1:50-1:200 IF/ICC:1:50-1:200 ELISA:Recommended starting concentration is 1 µg/mL. Please optimize the concentration based on your specific assay requirements.
Formulation	PBS with 0.05% Proclin300, 50% Glycerol, pH 7.3.
Isotype	IgG
Molecular Weight	Protein Mw: 50kDa Observed Mw: 45-50kDa
Storage Instruction	Store at -20°C for up to 1 year from the date of receipt, and avoid repeat freeze-thaw cycles.

TARGET INFORMATION

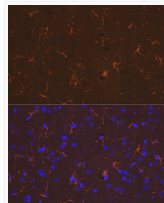
Gene ID	2670
Gene Symbol	GFAP
UniProt ID	GFAP_HUMAN
Immunogen Region	350-432
Immunogen Sequence	QDLLNVKLALDIEIATYRKL LEGEENRITIPVQTFSNLQI RETSLDTKSVSEGHKRNIV VKTVMRDGEVIKESKQEHK DVM
Specificity	A synthetic peptide corresponding to a sequence within amino acids 350-432 of human GFAP (NP_002046.1).

ADDITIONAL INFORMATION

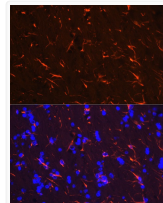
Note STRICTLY FOR FURTHER SCIENTIFIC RESEARCH USE ONLY (RUO). MUST NOT TO BE USED IN DIAGNOSTIC OR THERAPEUTIC APPLICATIONS.



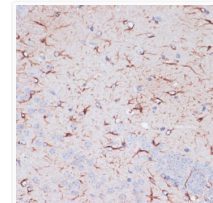
Immunofluorescence analysis of U-251MG cells using GFAP Rabbit polyclonal antibody (STJ116876) at dilution of 1:200 (40x lens). Blue: DAPI for nuclear staining.



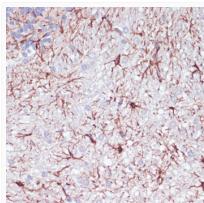
Immunofluorescence analysis of rat brain cells using GFAP Rabbit polyclonal antibody (STJ116876) at dilution of 1:200 (40x lens). Blue: DAPI for nuclear staining.



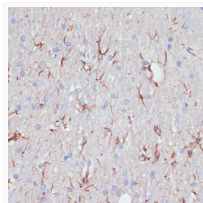
Immunofluorescence analysis of mouse brain cells using GFAP Rabbit polyclonal antibody (STJ116876) at dilution of 1:200 (40x lens). Blue: DAPI for nuclear staining.



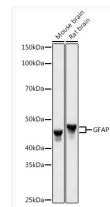
Immunohistochemistry analysis of paraffin-embedded mouse brain using GFAP antibody (STJ116876) at dilution of 1:100 (40x lens). Perform microwave antigen retrieval with 10 mM PBS buffer pH 7.2 before commencing with immunohistochemistry staining protocol.



Immunohistochemistry analysis of paraffin-embedded rat cerebellum using GFAP antibody (STJ116876) at dilution of 1:100 (40x lens). Perform microwave antigen retrieval with 10 mM PBS buffer pH 7.2 before commencing with immunohistochemistry staining protocol.



Immunohistochemistry analysis of paraffin-embedded rat brain using GFAP antibody (STJ116876) at dilution of 1:200 (40x lens). Perform microwave antigen retrieval with 10 mM PBS buffer pH 7.2 before commencing with immunohistochemistry staining protocol.



Western blot analysis of extracts of various cell lines, using GFAP antibody (STJ116876) at 1:1000 dilution. Secondary antibody: HRP Goat Anti-Rabbit IgG (H+L) (STJS000856) at 1:10000 dilution. Lysates/proteins: 25 µg per lane. Blocking buffer: 3% nonfat dry milk in TBST. Detection: ECL Basic Kit. Exposure time: 1s.