

## Anti-IL4R antibody (26-232) (STJ116854)

### GENERAL INFORMATION

Product Type	Primary antibodies
Applications	WB/IHC-P/ELISA
Host / Source	Rabbit
Reactivity	Human/Mouse/Rat

### PRODUCT PROPERTIES

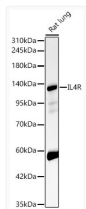
Clonality	Polyclonal
Concentration	Lot specific
Conjugation	Unconjugated
Purification	Affinity purification
Dilution Range	WB:1:500-1:2000 IHC-P:1:50-1:200 ELISA:Recommended starting concentration is 1 µg/mL. Please optimize the concentration based on your specific assay requirements.
Formulation	PBS with 0.05% Proclin300, 50% Glycerol, pH 7.3.
Isotype	IgG
Molecular Weight	Protein Mw: 90kDa Observed Mw: 140kDa
Storage Instruction	Store at -20°C for up to 1 year from the date of receipt, and avoid repeat freeze-thaw cycles.

### TARGET INFORMATION

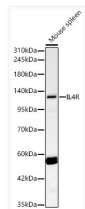
Gene ID	<a href="#">3566</a>
Gene Symbol	<a href="#">IL4R</a>
UniProt ID	<a href="#">IL4RA_HUMAN</a>
Immunogen Region	26-232
Immunogen Sequence	MKVLQEPTECVSDYMSISTCE WKMNGPTNCSTELRLLYQLV FLLSEAHTCIPENNGGAGCV CHLLMDDVVSADNYTLDLWA GQQLLWKGSEFKPSEHVKPRP PGNLTVHTNVSDTLLLTWSN PYPPDNYLYNHLYAVNIWS ENDPADFRIYNVTYLEPSLR IAASTLKSGISYRARVRAWA QCYNTTWSEWSPSTKWHNSY REPFEQH
Specificity	Recombinant fusion protein containing a sequence corresponding to amino acids 26-232 of human IL4R (NP_000409.1).

### ADDITIONAL INFORMATION

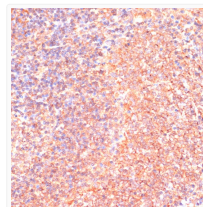
Note STRICTLY FOR FURTHER SCIENTIFIC RESEARCH USE ONLY (RUO). MUST NOT TO BE USED IN DIAGNOSTIC OR THERAPEUTIC APPLICATIONS.



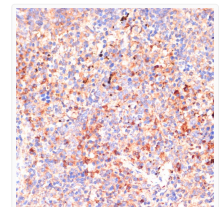
Western blot analysis of Rat lung, using IL4R rabbit polyclonal antibody (STJ116854) at 1:500 dilution. Secondary antibody: HRP Goat Anti-rabbit IgG (H+L) (STJS000856) at 1:10000 dilution. Lysates/proteins: 25µg per lane. Blocking buffer: 3% non-fat dry milk in TBST. Detection: ECL Basic Kit. Exposure time: 30s.



Western blot analysis of mouse spleen, using IL4R rabbit polyclonal antibody (STJ116854) at 1:500 dilution. Secondary antibody: HRP Goat Anti-rabbit IgG (H+L) (STJS000856) at 1:10000 dilution. Lysates/proteins: 25µg per lane. Blocking buffer: 3% non-fat dry milk in TBST. Detection: ECL Basic Kit. Exposure time: 60s.



Immunohistochemistry analysis of paraffin-embedded rat spleen using IL4R antibody (STJ116854) at dilution of 1:100 (40x lens). Perform microwave antigen retrieval with 10 mM PBS buffer pH 7. 2 before commencing with immunohistochemistry staining protocol.



Immunohistochemistry analysis of paraffin-embedded mouse spleen using IL4R antibody (STJ116854) at dilution of 1:100 (40x lens). Perform microwave antigen retrieval with 10 mM PBS buffer pH 7. 2 before commencing with immunohistochemistry staining protocol.