

Anti-CREB5 antibody (210-475) (STJ116842)

GENERAL INFORMATION

Product Type	Primary antibodies
Applications	WB/ELISA
Host / Source	Rabbit
Reactivity	Human/Rat

PRODUCT PROPERTIES

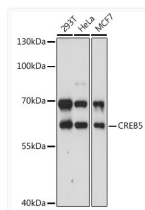
Clonality	Polyclonal
Concentration	Lot specific
Conjugation	Unconjugated
Purification	Affinity purification
Dilution Range	WB:1:1000-1:5000 ELISA:Recommended starting concentration is 1 μ g/mL. Please optimize the concentration based on your specific assay requirements.
Formulation	PBS with 0.05% Proclin300, 50% Glycerol, pH 7.3.
Isotype	IgG
Molecular Weight	Protein Mw: 57kDa Observed Mw: 57kDa
Storage Instruction	Store at -20°C for up to 1 year from the date of receipt, and avoid repeat freeze-thaw cycles.

TARGET INFORMATION

Gene ID	9586
Gene Symbol	CREB5
UniProt ID	CREB5_HUMAN
Immunogen Region	210-475
Immunogen Sequence	HPAAMSNGNMNTMGHMEMM GSRQDQTPHHMHSHPHQHQ TLPHPHPYPHQHQPAAHHPH PQPHHQNHPPHHSHSLHA HPAHHQTSPPPLHTGNQAA VSPATQQMQPTQTIQPPQPT GRRRRRVDEDPDERRRKFL ERNRAAATRCRQKRKVVVMS LEKKAELTQT
Specificity	Recombinant fusion protein containing a sequence corresponding to amino acids 210-380 of human CREB5 (NP_878902.2).

ADDITIONAL INFORMATION

Note STRICTLY FOR FURTHER SCIENTIFIC RESEARCH USE ONLY (RUO). MUST NOT TO BE USED IN DIAGNOSTIC OR THERAPEUTIC APPLICATIONS.



Western blot analysis of extracts of various cell lines, using CREB5 antibody (STJ116842) at 1:3000 dilution. Secondary antibody: HRP Goat Anti-Rabbit IgG (H+L) (STJS000856) at 1:10000 dilution. Lysates/proteins: 25 μ g per lane. Blocking buffer: 3% nonfat dry milk in TBST. Detection: ECL Basic Kit. Exposure time: 30s.