

Anti-SNW1 antibody (300-536) (STJ116790)

GENERAL INFORMATION

Product Type	Primary antibodies
Applications	WB/IHC-P/IF/ICC/ELISA
Host / Source	Rabbit
Reactivity	Human/Mouse/Rat

PRODUCT PROPERTIES

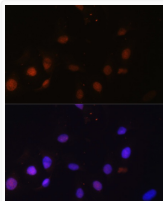
Clonality	Polyclonal
Concentration	Lot specific
Conjugation	Unconjugated
Purification	Affinity purification
Dilution Range	WB:1:500-1:2000 IHC-P:1:50-1:100 IF/ICC:1:50-1:200 ELISA:Recommended starting concentration is 1 µg/mL. Please optimize the concentration based on your specific assay requirements.
Formulation	PBS with 0.01% Thimerosal, 50% Glycerol, pH 7.3.
Isotype	IgG
Molecular Weight	Protein Mw: 61kDa Observed Mw: 70kDa/75kDa
Storage Instruction	Store at -20°C for up to 1 year from the date of receipt, and avoid repeat freeze-thaw cycles.

TARGET INFORMATION

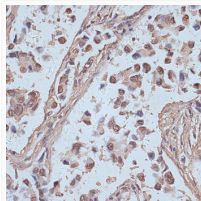
Gene ID	22938
Gene Symbol	SNW1
UniProt ID	SNW1_HUMAN
Immunogen Region	300-536
Immunogen Sequence	EAVEMRAQVERKMAQKEKEK HECKLREMAQKARERRAGIK THVEKEDGEARERDEIRHDDR RKERQHDRNLSRAAPDKRSK LQRNENRDISEVIALGVPNP RTSNEVQYDQRLFNQSKGMD SGFAGGEDEIYNVYDQAWRG GKDMAQSIYRPSKNLDKDMY GDDLEARIKTNRFPDKFEFS GSDRRQRGRGEPVQFEEDPF GLDKFLEEAKQHGGSKRPSD SSSRPKEHEHEGKKRRKE
Specificity	Recombinant fusion protein containing a sequence corresponding to amino acids 300-536 of human SNW1 (NP_036377.1).

ADDITIONAL INFORMATION

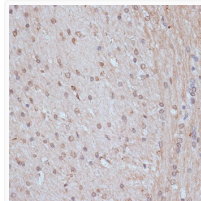
Note STRICTLY FOR FURTHER SCIENTIFIC RESEARCH USE ONLY (RUO). MUST NOT TO BE USED IN DIAGNOSTIC OR THERAPEUTIC APPLICATIONS.



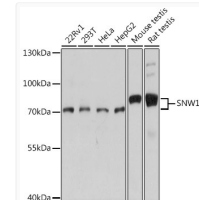
Immunofluorescence analysis of U-2 OS cells using SNW1 Rabbit polyclonal antibody (STJ116790) at dilution of 1:100. Secondary antibody: Cy3 Goat Anti-Rabbit IgG (H+L) at 1:500 dilution. Blue: DAPI for nuclear staining.



Immunohistochemistry analysis of SNW1 in paraffin-embedded human lung cancer using SNW1 Rabbit polyclonal antibody (STJ116790) at dilution of 1:100 (40x lens). Perform microwave antigen retrieval with 10 mM PBS buffer pH 7. 2 before commencing with immunohistochemistry staining protocol.



Immunohistochemistry analysis of SNW1 in paraffin-embedded rat brain using SNW1 Rabbit polyclonal antibody (STJ116790) at dilution of 1:100 (40x lens). Perform microwave antigen retrieval with 10 mM PBS buffer pH 7. 2 before commencing with immunohistochemistry staining protocol.



Western blot analysis of various lysates using SNW1 Rabbit polyclonal antibody (STJ116790) at 1:1000 dilution. Secondary antibody: HRP Goat Anti-Rabbit IgG (H+L) (STJS000856) at 1:10000 dilution. Lysates/proteins: 25 µg per lane. Blocking buffer: 3% nonfat dry milk in TBST. Detection: ECL Basic Kit. Exposure time: 10s.