

Anti-SLC22A8 antibody (75-94) (STJ116785)

GENERAL INFORMATION

Product Type	Primary antibodies
Applications	WB/ELISA
Host / Source	Rabbit
Reactivity	Human/Mouse/Rat

PRODUCT PROPERTIES

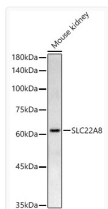
Clonality	Polyclonal
Concentration	Lot specific
Conjugation	Unconjugated
Purification	Affinity purification
Dilution Range	WB:1:100-1:500 ELISA:Recommended starting concentration is 1 µg/mL. Please optimize the concentration based on your specific assay requirements.
Formulation	PBS with 0.05% Proclin300, 50% Glycerol, pH 7.3.
Isotype	IgG
Molecular Weight	Protein Mw: 60kDa Observed Mw: 62kDa
Storage Instruction	Store at -20°C for up to 1 year from the date of receipt, and avoid repeat freeze-thaw cycles.

TARGET INFORMATION

Gene ID	9376
Gene Symbol	SLC22A8
UniProt ID	S22A8_HUMAN
Immunogen Region	75-94
Immunogen Sequence	MTFSEILDRVGSMGHFQFLH VAILGLPILNMANHNLLQIF TAATPVVHHC RPPHNASTGPW VLPMPGPNKPERCLRFRVHPP NASLPNDTQRAMEPCLDGWV
Specificity	A synthetic peptide corresponding to a sequence within amino acids 1-100 of human OAT3/SLC22A8 (NP_004245.2).

ADDITIONAL INFORMATION

Note STRICTLY FOR FURTHER SCIENTIFIC RESEARCH USE ONLY (RUO). MUST NOT TO BE USED IN DIAGNOSTIC OR THERAPEUTIC APPLICATIONS.



Western blot analysis of extracts of Mouse kidney, using OAT3/SLC22A8 Rabbit polyclonal antibody (STJ116785) at 1:500 dilution. Secondary antibody: HRP Goat Anti-Rabbit IgG (H+L) (STJS000856) at 1:10000 dilution. Lysates/proteins: 25 µg per lane. Blocking buffer: 3% nonfat dry milk in TBST. Detection: ECL Basic Kit. Exposure time: 180s.