

## Anti-FLCN antibody (341-579) (STJ116732)

### GENERAL INFORMATION

Product Type	Primary antibodies
Applications	WB/IF/ICC/ELISA
Host / Source	Rabbit
Reactivity	Human/Mouse/Rat

### PRODUCT PROPERTIES

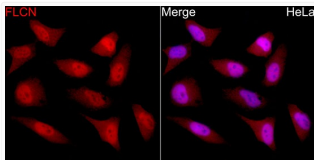
Clonality	Polyclonal
Concentration	Lot specific
Conjugation	Unconjugated
Purification	Affinity purification
Dilution Range	WB:1:500-1:1000 IF/CC:1:50-1:200 ELISA:Recommended starting concentration is 1 µg/mL. Please optimize the concentration based on your specific assay requirements.
Formulation	PBS with 0.01% Thimerosal, 50% Glycerol, pH 7.3.
Isotype	IgG
Molecular Weight	Protein Mw: 64kDa Observed Mw: 70kDa/
Storage Instruction	Store at -20°C for up to 1 year from the date of receipt, and avoid repeat freeze-thaw cycles.

### TARGET INFORMATION

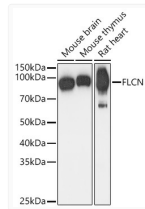
Gene ID	<a href="#">201163</a>
Gene Symbol	<a href="#">FLCN</a>
UniProt ID	<a href="#">FLCN_HUMAN</a>
Immunogen Region	341-579
Immunogen Sequence	RKLPVFKSLRHRMQVLGAPS FRMLAWHVLMGNOVIWKS RD VDLVQSAFEVLR TMLPVGCV RIIPYSSQYEEAYRCNFLGL SPHVQIPPHVLSSEFAVIVE VHAAARSTLHPVGCEDDQSL SKYEFVVTSGSPVAADRVGP TILNKIEAALTNQNLSVDVV DQCLVCLKEEWMNKVKVLFK FTKVDSRPKEDTQKLLSILG ASEEDNVKLLKFWM TGLSKT YKSHLMSTVRSPTASESRN
Specificity	Recombinant fusion protein containing a sequence corresponding to amino acids 341-579 of human FLCN (NP_659434.2).

### ADDITIONAL INFORMATION

Note **STRICTLY FOR FURTHER SCIENTIFIC RESEARCH USE ONLY (RUO). MUST NOT TO BE USED IN DIAGNOSTIC OR THERAPEUTIC APPLICATIONS.**



Immunofluorescence analysis of C6 cells using FLCN Rabbit polyclonal antibody (STJ116732) at dilution of 1:100. Secondary antibody: Cy3 Goat Anti-Rabbit IgG (H+L) at 1:500 dilution. Blue: DAPI for nuclear staining.



Western blot analysis of various lysates using FLCN Rabbit polyclonal antibody (STJ116732) at 1:1000 dilution. Secondary antibody: HRP Goat Anti-Rabbit IgG (H+L) (STJS000856) at 1:10000 dilution. Lysates/ proteins: 25 µg per lane. Blocking buffer: 3 % nonfat dry milk in TBST. Detection: ECL Basic Kit. Exposure time: 1s.