

## Anti-SNRPD1 antibody (1-96) (STJ116704)

### GENERAL INFORMATION

Product Type	Primary antibodies
Applications	WB/IHC-P/IF/ICC/ELISA
Host / Source	Rabbit
Reactivity	Human/Mouse/Rat

### PRODUCT PROPERTIES

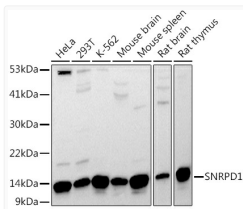
Clonality	Polyclonal
Concentration	Lot specific
Conjugation	Unconjugated
Purification	Affinity purification
Dilution Range	WB:1:500-1:1000 IHC-P:1:50-1:200 IF/ICC:1:50-1:200 ELISA:Recommended starting concentration is 1 Mu g/mL. Please optimize the concentration based on your specific assay requirements.
Formulation	PBS with 0.05% Proclin300, 50% Glycerol, pH 7.3.
Isotype	IgG
Molecular Weight	Protein Mw: 13kDa Observed Mw: 13kDa
Storage Instruction	Store at -20°C for up to 1 year from the date of receipt, and avoid repeat freeze-thaw cycles.

### TARGET INFORMATION

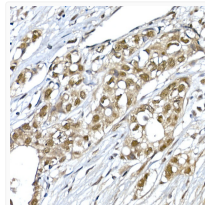
Gene ID	<a href="#">6632</a>
Gene Symbol	<a href="#">SNRPD1</a>
UniProt ID	<a href="#">SMD1_HUMAN</a>
Immunogen Region	1-96
Immunogen Sequence	MKLVRFMLKLSHETVTIELK NGTQVHGTITGVDSMNTHL KAVKMTLKNREPVQLETLSI RGNNIRYFILPDSLPLDRTL VDVEPKVKSKKREAVA
Specificity	Recombinant fusion protein containing a sequence corresponding to amino acids 1-96 of human SNRPD1 (NP_008869.1).

### ADDITIONAL INFORMATION

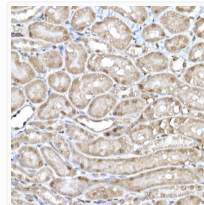
Note **STRICTLY FOR FURTHER SCIENTIFIC RESEARCH USE ONLY (RUO). MUST NOT TO BE USED IN DIAGNOSTIC OR THERAPEUTIC APPLICATIONS.**



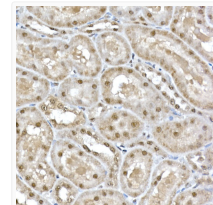
Western blot analysis of extracts of various cell lines, using SNRPD1 antibody (STJ116704) at 1:1000 dilution. Secondary antibody: HRP Goat Anti-rabbit IgG (H+L) (STJS000856) at 1:10000 dilution. Lysates/proteins: 25 Mu g per lane. Blocking buffer: 3% non-fat dry milk in TBST. Detection: ECL Basic Kit. Exposure time: 90s.



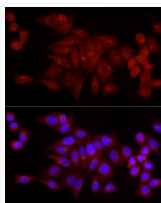
Immunohistochemistry analysis of paraffin-embedded human breast cancer using SNRPD1 rabbit polyclonal antibody (STJ116704) at dilution of 1:50 (40x lens). Perform high pressure antigen retrieval with 10 mM citrate buffer pH 6. 0 before commencing with immunohistochemistry staining protocol.



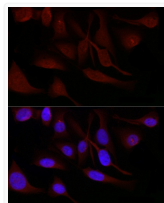
Immunohistochemistry analysis of paraffin-embedded mouse kidney using SNRPD1 rabbit polyclonal antibody (STJ116704) at dilution of 1:50 (40x lens). Perform high pressure antigen retrieval with 10 mM citrate buffer pH 6. 0 before commencing with immunohistochemistry staining protocol.



Immunohistochemistry analysis of paraffin-embedded rat kidney using SNRPD1 rabbit polyclonal antibody (STJ116704) at dilution of 1:50 (40x lens). Perform high pressure antigen retrieval with 10 mM citrate buffer pH 6. 0 before commencing with immunohistochemistry staining protocol.



Immunofluorescence analysis of HeLa cells using SNRPD1 rabbit polyclonal antibody (STJ116704) at dilution of 1:50 (40x lens). Blue: DAPI for nuclear staining.



Immunofluorescence analysis of U2OS cells using SNRPD1 rabbit polyclonal antibody (STJ116704) at dilution of 1:50 (40x lens). Blue: DAPI for nuclear staining.