

Anti-PDP2 antibody (67-250) (STJ116626)

GENERAL INFORMATION

Product Type	Primary antibodies
Applications	WB/ELISA
Host / Source	Rabbit
Reactivity	Human/Mouse/Rat

PRODUCT PROPERTIES

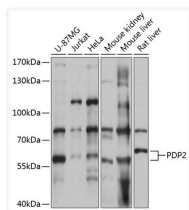
Clonality	Polyclonal
Concentration	Lot specific
Conjugation	Unconjugated
Purification	Affinity purification
Dilution Range	WB:1:500-1:2000 ELISA:Recommended starting concentration is 1 µg/mL. Please optimize the concentration based on your specific assay requirements.
Formulation	PBS with 0.01% Thimerosal, 50% Glycerol, pH 7.3.
Isotype	IgG
Molecular Weight	Protein Mw: 60kDa Observed Mw: 57kDa
Storage Instruction	Store at -20°C for up to 1 year from the date of receipt, and avoid repeat freeze-thaw cycles.

TARGET INFORMATION

Gene ID	57546
Gene Symbol	PDP2
UniProt ID	PDP2_HUMAN
Immunogen Region	67-250
Immunogen Sequence	STEEDDFHLQLSPEQINEVL RAGETTHKILDLESRPNSV LRFESNQLAANSPVEDRRGV ASCLQTNGLMFGIFDGHGGH ACAQAVSERLFYYVAVSLMS HQTLEHMEGAMESMKPLLPI LHWLKHGPGDSIYKDVTSVHL DHLRVYWQELLDLHMEMGLS IEEALMYSFQRLDSDISLEI QAPL
Specificity	Recombinant fusion protein containing a sequence corresponding to amino acids 67-250 of human PDP2 (NP_065837.1).

ADDITIONAL INFORMATION

Note STRICTLY FOR FURTHER SCIENTIFIC RESEARCH USE ONLY (RUO). MUST NOT TO BE USED IN DIAGNOSTIC OR THERAPEUTIC APPLICATIONS.



Western blot analysis of various lysates using PDP2 Rabbit pAb (STJ116626) at 1:3000 dilution. Secondary antibody: HRP-conjugated Goat anti-Rabbit IgG (H+L) (STJS000856) at 1:10000 dilution.

Lysates/proteins: 25 µg per lane.
 Blocking buffer: 3% nonfat dry milk in TBST.
 Detection: ECL Basic Kit
 Exposure time: 15s.