

## Anti-RABL3 antibody (1-236) (STJ116539)

### GENERAL INFORMATION

Product Type	Primary antibodies
Applications	WB/IF/ICC/ELISA
Host / Source	Rabbit
Reactivity	Human/Mouse

### PRODUCT PROPERTIES

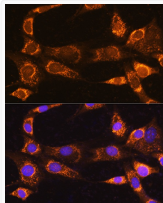
Clonality	Polyclonal
Concentration	Lot specific
Conjugation	Unconjugated
Purification	Affinity purification
Dilution Range	WB:1:500-1:2000 IF/CC:1:50-1:200 ELISA:Recommended starting concentration is 1 µg/mL. Please optimize the concentration based on your specific assay requirements.
Formulation	PBS with 0.01% Thimerosal, 50% Glycerol, pH 7.3.
Isotype	IgG
Molecular Weight	Protein Mw: 26kDa Observed Mw: 26kDa
Storage Instruction	Store at -20°C for up to 1 year from the date of receipt, and avoid repeat freeze-thaw cycles.

### TARGET INFORMATION

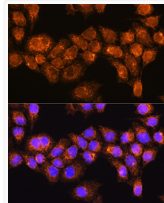
Gene ID	<a href="#">285282</a>
Gene Symbol	<a href="#">RABL3</a>
UniProt ID	<a href="#">RABL3_HUMAN</a>
Immunogen Region	1-236
Immunogen Sequence	MASLDRVKVLVLGDSGVGKS SLVHLLCQNVLGNPSWTVG CSDVVRVHDYKEGTPEEKTY YIELWDVGGSSVGSASSVKST RAVFYNSVNGIIFVHDLTNK KSSQNLRRWSLEALNRDLVP TGVLVTVNGDYDQEQFADNQL PLLVIGTKLDQIHETKRHEV LTRTAFLAEDFNPEEINLDC TNPRYLAAGSSNAVKLSRFF DKVIEKRYFLREGNQIPGFP DRKRFAGAGTLKSLHYD
Specificity	Recombinant fusion protein containing a sequence corresponding to amino acids 1-236 of human RABL3 (NP_776186.2).

### ADDITIONAL INFORMATION

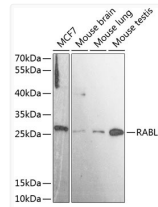
Note **STRICTLY FOR FURTHER SCIENTIFIC RESEARCH USE ONLY (RUO). MUST NOT TO BE USED IN DIAGNOSTIC OR THERAPEUTIC APPLICATIONS.**



Immunofluorescence analysis of NIH/3T3 cells using RABL3 Rabbit polyclonal antibody (STJ116539) at dilution of 1:100. Secondary antibody: Cy3 Goat Anti-Rabbit IgG (H+L) at 1:500 dilution. Blue: DAPI for nuclear staining.



Immunofluorescence analysis of HeLa cells using RABL3 Rabbit polyclonal antibody (STJ116539) at dilution of 1:100. Secondary antibody: Cy3 Goat Anti-Rabbit IgG (H+L) at 1:500 dilution. Blue: DAPI for nuclear staining.



Western blot analysis of various lysates using RABL3 Rabbit polyclonal antibody (STJ116539) at 1:3000 dilution. Secondary antibody: HRP Goat Anti-Rabbit IgG (H+L) (STJS000856) at 1:10000 dilution. Lysates/proteins: 25 µg per lane. Blocking buffer: 3% nonfat dry milk in TBST. Detection: ECL Basic Kit. Exposure time: 90s.