

Anti-NDUFA4L2 antibody (1-87) (STJ116500)

GENERAL INFORMATION

Product Type	Primary antibodies
Applications	WB/IHC-P/IF/ICC/ELISA
Host / Source	Rabbit
Reactivity	Human/Mouse/Rat

PRODUCT PROPERTIES

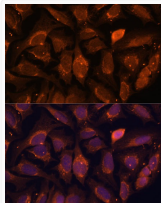
Clonality	Polyclonal
Concentration	Lot specific
Conjugation	Unconjugated
Purification	Affinity purification
Dilution Range	WB:1:500-1:2000 IHC-P:1:50-1:200 IF/ICC:1:50-1:200 ELISA:Recommended starting concentration is 1 Mu g/mL. Please optimize the concentration based on your specific assay requirements.
Formulation	PBS with 0.01% Thimerosal, 50% Glycerol, pH 7.3.
Isotype	IgG
Molecular Weight	Protein Mw: 10kDa Observed Mw: 12kDa
Storage Instruction	Store at -20°C for up to 1 year from the date of receipt, and avoid repeat freeze-thaw cycles.

TARGET INFORMATION

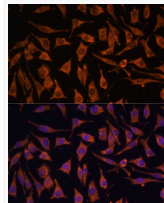
Gene ID	56901
Gene Symbol	NDUFA4L2
UniProt ID	NUA4L_HUMAN
Immunogen Region	1-87
Immunogen Sequence	MAGASLGARFYRQIKRHPGI IPMIGLICLGMGSAALYLLR LALRSPDVCWDRKNNPEPWN RLSPNDQYKFLAVSTDYKKL KKDRPDF
Specificity	Recombinant fusion protein containing a sequence corresponding to amino acids 1-87 of human NDUFA4L2 (NP_064527.1).

ADDITIONAL INFORMATION

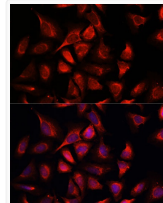
Note **STRICTLY FOR FURTHER SCIENTIFIC RESEARCH USE ONLY (RUO). MUST NOT TO BE USED IN DIAGNOSTIC OR THERAPEUTIC APPLICATIONS.**



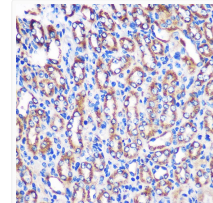
Immunofluorescence analysis of U-2 OS cells using NDUFA4L2 Rabbit polyclonal antibody (STJ116500) at dilution of 1:100. Secondary antibody: Cy3 Goat Anti-Rabbit IgG (H+L) at 1:500 dilution. Blue: DAPI for nuclear staining.



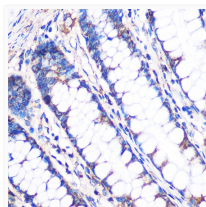
Immunofluorescence analysis of L929 cells using NDUFA4L2 Rabbit polyclonal antibody (STJ116500) at dilution of 1:100. Secondary antibody: Cy3 Goat Anti-Rabbit IgG (H+L) at 1:500 dilution. Blue: DAPI for nuclear staining.



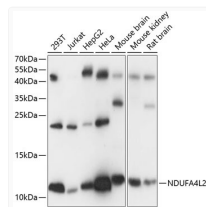
Immunofluorescence analysis of C6 cells using NDUFA4L2 Rabbit polyclonal antibody (STJ116500) at dilution of 1:100. Secondary antibody: Cy3 Goat Anti-Rabbit IgG (H+L) at 1:500 dilution. Blue: DAPI for nuclear staining.



Immunohistochemistry analysis of NDUFA4L2 in paraffin-embedded Mouse kidney using NDUFA4L2 Rabbit polyclonal antibody (STJ116500) at dilution of 1:100 (40x lens). Perform microwave antigen retrieval with 10 mM PBS buffer pH 7.2 before commencing with immunohistochemistry staining protocol.



Immunohistochemistry analysis of NDUFA4L2 in paraffin-embedded Human colon using NDUFA4L2 Rabbit polyclonal antibody (STJ116500) at dilution of 1:100 (40x lens). Perform microwave antigen retrieval with 10 mM PBS buffer pH 7.2 before commencing with immunohistochemistry staining protocol.



Western blot analysis of various lysates using NDUFA4L2 Rabbit polyclonal antibody (STJ116500) at 1:1000 dilution. Secondary antibody: HRP Goat Anti-Rabbit IgG (H+L) (STJS000856) at 1:10000 dilution. Lysates/proteins: 25 Mu g per lane. Blocking buffer: 3% nonfat dry milk in TBST. Detection: ECL Basic Kit. Exposure time: 5s.