

Anti-TYRO3 antibody (290-430) (STJ116472)

GENERAL INFORMATION

Product Type	Primary antibodies
Applications	WB/ELISA
Host / Source	Rabbit
Reactivity	Mouse/Rat

PRODUCT PROPERTIES

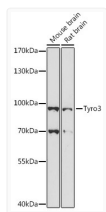
Clonality	Polyclonal
Concentration	Lot specific
Conjugation	Unconjugated
Purification	Affinity purification
Dilution Range	WB:1:500-1:1000 ELISA:Recommended starting concentration is 1 µg/mL. Please optimize the concentration based on your specific assay requirements.
Formulation	PBS with 0.01% Thimerosal, 50% Glycerol, pH 7.3.
Isotype	IgG
Molecular Weight	Protein Mw: 97kDa Observed Mw: 97kDa
Storage Instruction	Store at -20°C for up to 1 year from the date of receipt, and avoid repeat freeze-thaw cycles.

TARGET INFORMATION

Gene ID	7301
Gene Symbol	TYRO3
UniProt ID	TYRO3_HUMAN
Immunogen Region	290-430
Immunogen Sequence	PATNYSLRVRCANALGSPSY ADWVPFQTKGLAPASAPQNL HAIRTD SGLILEWEEVIPEA PLEGPLGPKL SWVQDNGTQ DELTVEGTRANLTGWDPQKD LIVRVCVSNVAVGCGPWSQPL VVSSHDRAGQQGPPHSRTSW V
Specificity	Recombinant fusion protein containing a sequence corresponding to amino acids 290-430 of human Tyro3 (NP_006284.2).

ADDITIONAL INFORMATION

Note STRICTLY FOR FURTHER SCIENTIFIC RESEARCH USE ONLY (RUO). MUST NOT TO BE USED IN DIAGNOSTIC OR THERAPEUTIC APPLICATIONS.



Western blot analysis of various lysates using Tyro3 Rabbit polyclonal antibody (STJ116472) at 1:1000 dilution. Secondary antibody: HRP Goat Anti-Rabbit IgG (H+L) (STJS000856) at 1:10000 dilution. Lysates/proteins: 25 µg per lane. Blocking buffer: 3% nonfat dry milk in TBST. Detection: ECL Enhanced Kit. Exposure time: 90s.