

Anti-RPL21 antibody (1-160) (STJ116467)

GENERAL INFORMATION

Product Type	Primary antibodies
Applications	WB/IHC-P/IF/ICC/ELISA
Host / Source	Rabbit
Reactivity	Human/Mouse/Rat

PRODUCT PROPERTIES

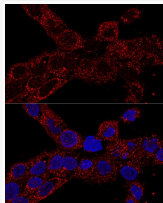
Clonality	Polyclonal
Concentration	Lot specific
Conjugation	Unconjugated
Purification	Affinity purification
Dilution Range	WB:1:500-1:2000 IHC-P:1:50-1:100 IF/CC:1:50-1:100 ELISA:Recommended starting concentration is 1 μ g/mL. Please optimize the concentration based on your specific assay requirements.
Formulation	PBS with 0.01% Thimerosal, 50% Glycerol, pH 7.3.
Isotype	IgG
Molecular Weight	Protein Mw: 19kDa Observed Mw: 18kDa
Storage Instruction	Store at -20°C for up to 1 year from the date of receipt, and avoid repeat freeze-thaw cycles.

TARGET INFORMATION

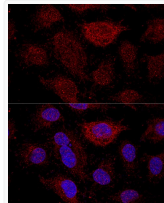
Gene ID	6144
Gene Symbol	RPL21
UniProt ID	RL21_HUMAN
Immunogen Region	1-160
Immunogen Sequence	MTNTKGGRRGTRYMFSRPFR KHGTVPLATYMRIYKGGDIV DIKGMGTVQKGMPHKCYHGK TGRVYVNTQHAVGIVVNKQV KGKILAKRINVRIEHIKHSK SRDSFLKRVKENDQKKKEAK EKGTWVQLKRPAPPREAHF VRTNGKEPELLEPIPYEFMA
Specificity	Recombinant fusion protein containing a sequence corresponding to amino acids 1-160 of human RPL21 (NP_000973.2).

ADDITIONAL INFORMATION

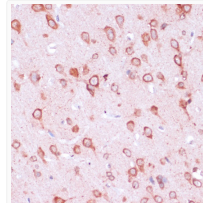
Note **STRICTLY FOR FURTHER SCIENTIFIC RESEARCH USE ONLY (RUO). MUST NOT TO BE USED IN DIAGNOSTIC OR THERAPEUTIC APPLICATIONS.**



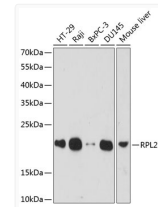
Confocal immunofluorescence analysis of A-431 cells using RPL21 Rabbit polyclonal antibody (STJ116467) at dilution of 1:100. Blue: DAPI for nuclear staining.



Confocal immunofluorescence analysis of HeLa cells using RPL21 Rabbit polyclonal antibody (STJ116467) at dilution of 1:200. Blue: DAPI for nuclear staining.



Immunohistochemistry analysis of RPL21 in paraffin-embedded rat brain using RPL21 Rabbit polyclonal antibody (STJ116467) at dilution of 1:100 (40x lens). Perform microwave antigen retrieval with 10 mM PBS buffer pH 7.2 before commencing with immunohistochemistry staining protocol.



Western blot analysis of various lysates using RPL21 Rabbit polyclonal antibody (STJ116467) at 1:1000 dilution. Secondary antibody: HRP Goat Anti-Rabbit IgG (H+L) (STJ000856) at 1:10000 dilution. Lysates/proteins: 25 μ g per lane. Blocking buffer: 3% nonfat dry milk in TBST. Detection: ECL Basic Kit. Exposure time: 60s.