

## Anti-HMGCS2 antibody (269-508) (STJ116457)

### GENERAL INFORMATION

Product Type	Primary antibodies
Applications	WB/IHC-P/IF/ICC/ELISA
Host / Source	Rabbit
Reactivity	Human/Mouse/Rat

### PRODUCT PROPERTIES

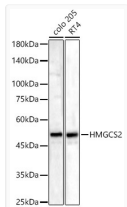
Clonality	Polyclonal
Concentration	Lot specific
Conjugation	Unconjugated
Purification	Affinity purification
Dilution Range	WB:1:2000-1:8000 IHC-P:1:50-1:100 IF/CC:1:50-1:100 ELISA:Recommended starting concentration is 1 µg/mL. Please optimize the concentration based on your specific assay requirements.
Formulation	PBS with 0.05% Proclin300, 50% Glycerol, pH 7.3.
Isotype	IgG
Molecular Weight	Protein Mw: 57kDa Observed Mw: 50kDa
Storage Instruction	Store at -20°C for up to 1 year from the date of receipt, and avoid repeat freeze-thaw cycles.

### TARGET INFORMATION

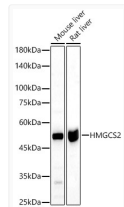
Gene ID	<a href="#">3158</a>
Gene Symbol	<a href="#">HMGCS2</a>
UniProt ID	<a href="#">HMCS2_HUMAN</a>
Immunogen Region	269-508
Immunogen Sequence	CYTSYRKKIQNQWKQAGSDR PFTLDDLQYMFHTPFCKMV QKSLARLMFNDFLSASSDTQ TSLYKGLEAFGGGLKLEDYTKDLDKALKASQDMFDKKT KASLYLSTHNGNMYTSSLYG CLASLLSHSAQELAGSRIG AFSYGSGLAASFFSFRVSQD AAGGSPDKLVSSSTDLPKR LASRKCVPPEEFTEIMNQRE QFYHKVNFSPPGDNTSLFPG TWYLERVDEQHRKRYARRP
Specificity	Recombinant fusion protein containing a sequence corresponding to amino acids 269-508 of human HMGCS2 (NP_005509.1).

### ADDITIONAL INFORMATION

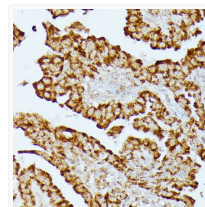
Note **STRICTLY FOR FURTHER SCIENTIFIC RESEARCH USE ONLY (RUO). MUST NOT BE USED IN DIAGNOSTIC OR THERAPEUTIC APPLICATIONS.**



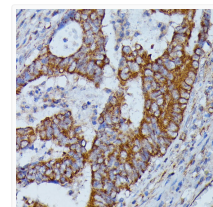
Western blot analysis of various lysates, using HMGCS2 rabbit polyclonal antibody (STJ116457) at 1:1000 dilution. Secondary antibody: HRP Goat Anti-rabbit IgG (H+L) (STJS000856) at 1:10000 dilution. Lysates/proteins: 25 µg per lane. Blocking buffer: 3% non-fat dry milk in TBST. Detection: ECL Basic Kit. Exposure time: 90s.



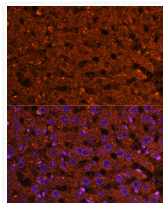
Immunohistochemistry analysis of paraffin-embedded human thyroid cancer using HMGCS2 antibody (STJ116457) at dilution of 1:100 (40x lens). Perform microwave antigen retrieval with 10 mM PBS buffer pH 7.2 before commencing with immunohistochemistry staining protocol.



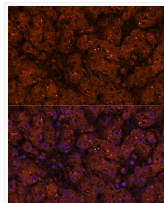
Immunohistochemistry analysis of paraffin-embedded human colon carcinoma using HMGCS2 antibody (STJ116457) at dilution of 1:100 (40x lens). Perform microwave antigen retrieval with 10 mM PBS buffer pH 7.2 before commencing with immunohistochemistry staining protocol.



Immunofluorescence analysis of rat liver using HMGCS2 Polyclonal Antibody (STJ116457) at dilution of 1:100 (40x lens). Blue: DAPI for nuclear staining.



Immunofluorescence analysis of human liver using HMGCS2 Polyclonal Antibody (STJ116457) at dilution of 1:100 (40x lens). Blue: DAPI for nuclear staining.



Immunofluorescence analysis of mouse liver using HMGCS2 Polyclonal Antibody (STJ116457) at dilution of 1:100 (40x lens). Blue: DAPI for nuclear staining.

