

Anti-GUCY2F antibody (250-460) (STJ116455)

GENERAL INFORMATION

Product Type	Primary antibodies
Applications	WB/ELISA
Host / Source	Rabbit
Reactivity	Mouse/Rat

PRODUCT PROPERTIES

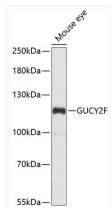
Clonality	Polyclonal
Concentration	Lot specific
Conjugation	Unconjugated
Purification	Affinity purification
Dilution Range	WB:1:500-1:2000 ELISA:Recommended starting concentration is 1 µg/mL. Please optimize the concentration based on your specific assay requirements.
Formulation	PBS with 0.01% Thimerosal, 50% Glycerol, pH 7.3.
Isotype	IgG
Molecular Weight	Protein Mw: 125kDa Observed Mw: 125kDa
Storage Instruction	Store at -20°C for up to 1 year from the date of receipt, and avoid repeat freeze-thaw cycles.

TARGET INFORMATION

Gene ID	2986
Gene Symbol	GUCY2F
UniProt ID	GUC2F_HUMAN
Immunogen Region	250-460
Immunogen Sequence	HSALIGGETQMHLLCAHDL KMTDGTGVFVFPYDALLYSLP YKHTPYRVLRRNNPKLREAYD AVLTITVESQEKTFYQAFTE AAARGEIPEKLEFDQVSPLF GTIYNSIYFIAQAMNNAMKE NGQAGAASLVQHSRNMQFHG FNQLMRTDSNGNGISEYVIL DTNLKEWELHSTYTVDMEME LLRFGGTPIHFPGGRPPRAD AKCWFAEGKIC
Specificity	Recombinant fusion protein containing a sequence corresponding to amino acids 250-460 of human GUCY2F (NP_001513.2).

ADDITIONAL INFORMATION

Note STRICTLY FOR FURTHER SCIENTIFIC RESEARCH USE ONLY (RUO). MUST NOT TO BE USED IN DIAGNOSTIC OR THERAPEUTIC APPLICATIONS.



Western blot analysis of lysates from mouse eye, using GUCY2F Rabbit polyclonal antibody (STJ116455) at 1:1000 dilution. Secondary antibody: HRP Goat Anti-Rabbit IgG (H+L) (STJS00856) at 1:10000 dilution. Lysates/proteins: 25 µg per lane. Blocking buffer: 3% nonfat dry milk in TBST. Detection: ECL Basic Kit. Exposure time: 90s.