

Anti-CDH3 antibody (24-350) (STJ116448)

GENERAL INFORMATION

Product Type	Primary antibodies
Applications	WB/IHC-P/IF/ICC/ELISA
Host / Source	Rabbit
Reactivity	Human/Mouse/Rat

PRODUCT PROPERTIES

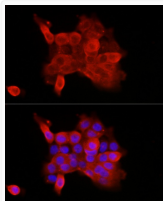
Clonality	Polyclonal
Concentration	Lot specific
Conjugation	Unconjugated
Purification	Affinity purification
Dilution Range	WB:1:500-1:2000 IHC-P:1:50-1:200 IF/CC:1:50-1:200 ELISA:Recommended starting concentration is 1 μ g/mL. Please optimize the concentration based on your specific assay requirements.
Formulation	PBS with 0.01% Thimerosal, 50% Glycerol, pH 7.3.
Isotype	IgG
Molecular Weight	Protein Mw: 91kDa Observed Mw: 115kDa
Storage Instruction	Store at -20°C for up to 1 year from the date of receipt, and avoid repeat freeze-thaw cycles.

TARGET INFORMATION

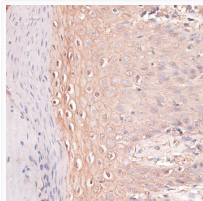
Gene ID	1001
Gene Symbol	CDH3
UniProt ID	CADH3_HUMAN
Immunogen Region	24-350
Immunogen Sequence	SEPCRAVFREA EVTLEAGGA EQEPGQALGKVFMGCPGQEP ALFSTDNDDFTVRNGETVQE RRSLKERNPLKIFPSKRILR RHKRDWVVAPISVPENKGGP FPQRLNQLKSNKDRDTKIFY SITGPGADSPPEGVFAVEKE TGVLLLNKPLDREEIAKYEL FGHAVSENGASVEDPMNISI IVTDQNDHKPKFTQDTFRGS VLEGVLPGTSVMQVTATDED DAIITYNGVVAYSISQEP
Specificity	Recombinant fusion protein containing a sequence corresponding to amino acids 24-350 of human CDH3 (NP_001784.2).

ADDITIONAL INFORMATION

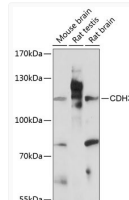
Note	STRICTLY FOR FURTHER SCIENTIFIC RESEARCH USE ONLY (RUO). MUST NOT TO BE USED IN DIAGNOSTIC OR THERAPEUTIC APPLICATIONS.
------	---



Immunofluorescence analysis of A431 cells using CDH3 Rabbit polyclonal antibody (STJ116448) at dilution of 1:100 (40x lens). Secondary antibody: Cy3 Goat Anti-Rabbit IgG (H+L) at 1:500 dilution. Blue: DAPI for nuclear staining.



Immunohistochemistry analysis of CDH3 in paraffin-embedded human skin using CDH3 Rabbit polyclonal antibody (STJ116448) at dilution of 1:100 (40x lens). Perform microwave antigen retrieval with 10 mM PBS buffer pH 7.2 before commencing with immunohistochemistry staining protocol.



Western blot analysis of various lysates using CDH3 Rabbit polyclonal antibody (STJ116448) at 1:3000 dilution. Secondary antibody: HRP Goat Anti-Rabbit IgG (H+L) (STJS000856) at 1:10000 dilution. Lysates/proteins: 25 μ g per lane. Blocking buffer: 3% nonfat dry milk in TBST. Detection: ECL Basic Kit. Exposure time: 90s.