

## Anti-APOC3 antibody (1-99) (STJ116430)

### GENERAL INFORMATION

Product Type	Primary antibodies
Applications	WB/IHC-P/IF/ICC/ELISA
Host / Source	Rabbit
Reactivity	Human/Mouse/Rat

### PRODUCT PROPERTIES

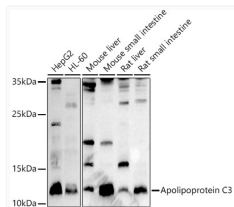
Clonality	Polyclonal
Concentration	Lot specific
Conjugation	Unconjugated
Purification	Affinity purification
Dilution Range	WB:1:500-1:1000 IHC-P:1:100-1:200 IF/CC:1:50-1:200 ELISA:Recommended starting concentration is 1 µg/mL. Please optimize the concentration based on your specific assay requirements.
Formulation	PBS with 0.05% Proclin300, 50% Glycerol, pH 7.3.
Isotype	IgG
Molecular Weight	Protein Mw: 11kDa Observed Mw: 11kDa
Storage Instruction	Store at -20°C for up to 1 year from the date of receipt, and avoid repeat freeze-thaw cycles.

### TARGET INFORMATION

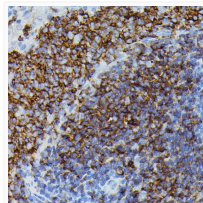
Gene ID	<a href="#">345</a>
Gene Symbol	<a href="#">APOC3</a>
UniProt ID	<a href="#">APOC3_HUMAN</a>
Immunogen Region	1-99
Immunogen Sequence	MQPRVLLVVALLALLASARA SEAEDASLLSFMQGYMKHAT KTKADALSSVQESQVAQQAR GWVTDGFSSLKDYWSTVKDK FSEFWLDLPEVRPTSAVAA
Specificity	A synthetic peptide corresponding to a sequence within amino acids 1-99 of human Apolipoprotein C3 (NP_000031.1).

### ADDITIONAL INFORMATION

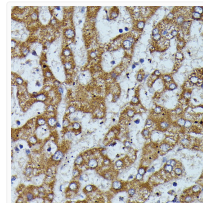
Note **STRICTLY FOR FURTHER SCIENTIFIC RESEARCH USE ONLY (RUO). MUST NOT TO BE USED IN DIAGNOSTIC OR THERAPEUTIC APPLICATIONS.**



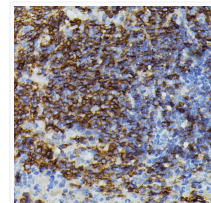
Western blot analysis of extracts of various cell lines, using Apolipoprotein C3 antibody (STJ116430) at 1:1000 dilution. Secondary antibody: HRP Goat Anti-rabbit IgG (H+L) (STJS00856) at 1:10000 dilution. Lysates/proteins: 25 µg per lane. Blocking buffer: 3% non-fat dry milk in TBST. Detection: ECL Basic Kit. Exposure time: 90s.



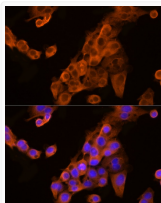
Immunohistochemistry analysis of paraffin-embedded rat spleen using Apolipoprotein C3 antibody (STJ116430) at dilution of 1:100 (40x lens). Perform microwave antigen retrieval with 10 mM PBS buffer pH 7.2 before commencing with immunohistochemistry staining protocol.



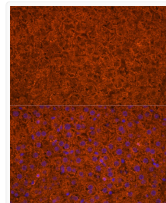
Immunohistochemistry analysis of paraffin-embedded human liver using Apolipoprotein C3 antibody (STJ116430) at dilution of 1:100 (40x lens). Perform microwave antigen retrieval with 10 mM PBS buffer pH 7.2 before commencing with immunohistochemistry staining protocol.



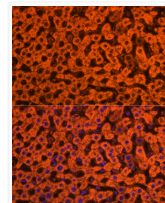
Immunohistochemistry analysis of paraffin-embedded mouse spleen using Apolipoprotein C3 antibody (STJ116430) at dilution of 1:100 (40x lens). Perform microwave antigen retrieval with 10 mM PBS buffer pH 7.2 before commencing with immunohistochemistry staining protocol.



Immunofluorescence analysis of HepG2 cells using Apolipoprotein C3 rabbit polyclonal antibody (STJ116430) at dilution of 1:200 (40x lens). Blue: DAPI for nuclear staining.



Immunofluorescence analysis of mouse liver cells using Apolipoprotein C3 rabbit polyclonal antibody (STJ116430) at dilution of 1:200 (40x lens). Blue: DAPI for nuclear staining.



Immunofluorescence analysis of rat liver cells using Apolipoprotein C3 rabbit polyclonal antibody (STJ116430) at dilution of 1:200 (40x lens). Blue: DAPI for nuclear staining.