

Anti-PDCD1 antibody (205-259) (STJ116416)

GENERAL INFORMATION

Product Type	Primary antibodies
Applications	WB/IF/ICC/ELISA
Host / Source	Rabbit
Reactivity	Human/Mouse/Rat

PRODUCT PROPERTIES

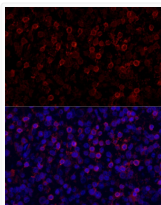
Clonality	Polyclonal
Concentration	Lot specific
Conjugation	Unconjugated
Purification	Affinity purification
Dilution Range	WB:1:500-1:1000 IF/CC:1:50-1:200 ELISA:Recommended starting concentration is 1 Mu g/mL. Please optimize the concentration based on your specific assay requirements.
Formulation	PBS with 0.02% Sodium Azide, 50% Glycerol, pH 7.3.
Isotype	IgG
Molecular Weight	Protein Mw: 32kDa Observed Mw: 50kDa/35kDa
Storage Instruction	Store at -20°C for up to 1 year from the date of receipt, and avoid repeat freeze-thaw cycles.

TARGET INFORMATION

Gene ID	5133
Gene Symbol	PDCD1
UniProt ID	PDCD1_HUMAN
Immunogen Region	205-259
Immunogen Sequence	TGQPLKEDPSAVPVFVSDYG ELDFQWREKTPEPPVPCVPE QTEYATIVFPSGMGT
Specificity	Recombinant fusion protein containing a sequence corresponding to amino acids 205-259 of human PD-1/CD279 (NP_005009.2).

ADDITIONAL INFORMATION

Note **STRICTLY FOR FURTHER SCIENTIFIC RESEARCH USE ONLY (RUO). MUST NOT TO BE USED IN DIAGNOSTIC OR THERAPEUTIC APPLICATIONS.**



Immunofluorescence analysis of paraffin-embedded human tonsil using PD-1/CD279 Rabbit polyclonal antibody (STJ116416) at dilution of 1:100 (40x lens). Secondary antibody: Cy3 Goat Anti-Rabbit IgG (H+L) at 1:500 dilution. Blue: DAPI for nuclear staining.

