

## Anti-AKR1C2 antibody (1-323) (STJ116408)

### GENERAL INFORMATION

Product Type	Primary antibodies
Applications	WB/IHC-P/IF/ICC/ELISA
Host / Source	Rabbit
Reactivity	Human/Mouse/Rat

### PRODUCT PROPERTIES

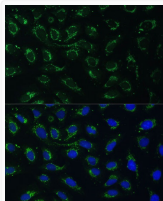
Clonality	Polyclonal
Concentration	Lot specific
Conjugation	Unconjugated
Purification	Affinity purification
Dilution Range	WB:1:1000-1:5000 IHC-P:1:50-1:200 IF/ICC:1:50-1:100 ELISA:Recommended starting concentration is 1 Mu g/mL. Please optimize the concentration based on your specific assay requirements.
Formulation	PBS with 0.05% Proclin300, 50% Glycerol, pH 7.3.
Isotype	IgG
Molecular Weight	Protein Mw: 37kDa Observed Mw: 37kDa
Storage Instruction	Store at -20°C for up to 1 year from the date of receipt, and avoid repeat freeze-thaw cycles.

### TARGET INFORMATION

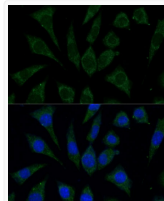
Gene ID	<a href="#">1646</a>
Gene Symbol	<a href="#">AKR1C2</a>
UniProt ID	<a href="#">AK1C2_HUMAN</a>
Immunogen Region	1-323
Immunogen Sequence	MDSKYQCVKLNLDGHPVGLG FGTYAPAEPKSKALEAVKL AIEAGFHIDSAHVYNNEEQ VGLAIRSKIADGSKREDIF YTSKLWSNSHRPELVRPALE RSLKNLQLDYVDLYLIHFPV SVKPGEEVIPKDENGKILFD TVDLCATWEAMEKCKDAGLA KSIGVSNFNHRLLEMILNKP GLKYKPVNCQVECHPYFNQR KLLDFCKSKDIVLVAYSALG SHREEPWVDPNSPVLLEDP
Specificity	Recombinant fusion protein containing a sequence corresponding to amino acids 1-323 of human AKR1C2 (NP_995317.1).

### ADDITIONAL INFORMATION

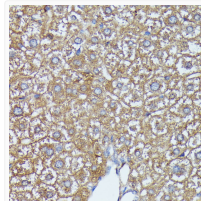
Note STRICTLY FOR FURTHER SCIENTIFIC RESEARCH USE ONLY (RUO). MUST NOT TO BE USED IN DIAGNOSTIC OR THERAPEUTIC APPLICATIONS.



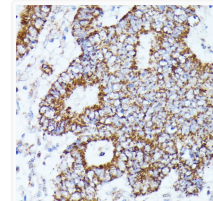
Immunofluorescence analysis of U-2 OS cells using AKR1C2 Polyclonal Antibody (STJ116408) at dilution of 1:100 (40x lens). Blue: DAPI for nuclear staining.



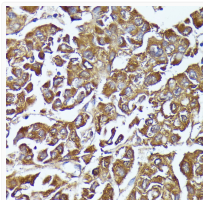
Immunofluorescence analysis of L929 cells using AKR1C2 Polyclonal Antibody (STJ116408) at dilution of 1:100 (40x lens). Blue: DAPI for nuclear staining.



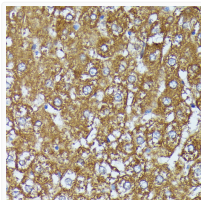
Immunohistochemistry analysis of paraffin-embedded mouse liver using AKR1C2 Rabbit polyclonal antibody (STJ116408) at dilution of 1:100 (40x lens). Perform microwave antigen retrieval with 10 mM PBS buffer pH 7. 2 before commencing with immunohistochemistry staining protocol.



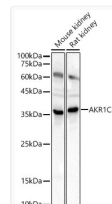
Immunohistochemistry analysis of paraffin-embedded human Colon cancer using AKR1C2 Rabbit polyclonal antibody (STJ116408) at dilution of 1:100 (40x lens). Perform microwave antigen retrieval with 10 mM PBS buffer pH 7. 2 before commencing with immunohistochemistry staining protocol.



Immunohistochemistry analysis of paraffin-embedded human liver cancer using AKR1C2 Rabbit polyclonal antibody (STJ116408) at dilution of 1:100 (40x lens). Perform microwave antigen retrieval with 10 mM PBS buffer pH 7. 2 before commencing with immunohistochemistry staining protocol.



Immunohistochemistry analysis of paraffin-embedded rat liver using AKR1C2 Rabbit polyclonal antibody (STJ116408) at dilution of 1:100 (40x lens). Perform microwave antigen retrieval with 10 mM PBS buffer pH 7. 2 before commencing with immunohistochemistry staining protocol.



Western blot analysis of various lysates, using AKR1C2 antibody (STJ116408) at 1:2000 dilution. Secondary antibody: HRP Goat Anti-Rabbit IgG (H+L) (STJS000856) at 1:10000 dilution. Lysates/proteins: 25 Mu g per lane. Blocking buffer: 3% nonfat dry milk in TBST. Detection: ECL Basic Kit. Exposure time: 10s.