

## Anti-ATF7IP antibody (525-725) (STJ116407)

### GENERAL INFORMATION

Product Type	Primary antibodies
Applications	WB/ELISA
Host / Source	Rabbit
Reactivity	Human/Mouse

### PRODUCT PROPERTIES

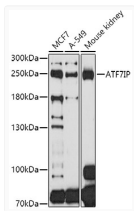
Clonality	Polyclonal
Concentration	Lot specific
Conjugation	Unconjugated
Purification	Affinity purification
Dilution Range	WB:1:500-1:1000 ELISA:Recommended starting concentration is 1 µg/mL. Please optimize the concentration based on your specific assay requirements.
Formulation	PBS with 0.02% Sodium Azide, 50% Glycerol, pH 7.3.
Isotype	IgG
Molecular Weight	Protein Mw: 136kDa Observed Mw: 250kDa
Storage Instruction	Store at -20°C for up to 1 year from the date of receipt, and avoid repeat freeze-thaw cycles.

### TARGET INFORMATION

Gene ID	<a href="#">55729</a>
Gene Symbol	<a href="#">ATF7IP</a>
UniProt ID	<a href="#">MCAF1_HUMAN</a>
Immunogen Region	525-725
Immunogen Sequence	NEKDNKPEEEEQVIHEDDER PSEKNEFSRRKRKSKSEMDN VQSKRRRRYMEEYEAEFQVK ITAKGDINQKLQKVIQWLL EKLQALQCAVFDKTLAELKT RVEKIECNKRHKTVLTELQA KIARLTKRFEAAKEDLKKRH EHPPNPPVSPGKTVNDVNSN NNMSYRNAGTVRQMLESKRN VSESAPPSFQTPVNTVSSTN L
Specificity	Recombinant fusion protein containing a sequence corresponding to amino acids 525-725 of human ATF7IP (NP_060649.3).

### ADDITIONAL INFORMATION

Note **STRICTLY FOR FURTHER SCIENTIFIC RESEARCH USE ONLY (RUO). MUST NOT TO BE USED IN DIAGNOSTIC OR THERAPEUTIC APPLICATIONS.**



Western blot analysis of extracts of various cell lines, using ATF7IP antibody (STJ116407) at 1:1000 dilution. Secondary antibody: HRP Goat Anti-Rabbit IgG (H+L) (STJS000856) at 1:10000 dilution. Lysates/proteins: 25 µg per lane. Blocking buffer: 3% nonfat dry milk in TBST. Detection: ECL Basic Kit. Exposure time: 60s.