

Anti-KLHL42 antibody (206-505) (STJ116406)

GENERAL INFORMATION

Product Type	Primary antibodies
Applications	IHC-P/ELISA
Host / Source	Rabbit
Reactivity	Human/Mouse

PRODUCT PROPERTIES

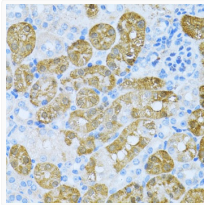
Clonality	Polyclonal
Concentration	Lot specific
Conjugation	Unconjugated
Purification	Affinity purification
Dilution Range	IHC-P:1:50-1:200 ELISA:Recommended starting concentration is 1 µg/mL. Please optimize the concentration based on your specific assay requirements.
Formulation	PBS with 0.02% Sodium Azide, 50% Glycerol, pH 7.3.
Isotype	IgG
Molecular Weight	Protein Mw: 57kDa Observed Mw:
Storage Instruction	Store at -20°C for up to 1 year from the date of receipt, and avoid repeat freeze-thaw cycles.

TARGET INFORMATION

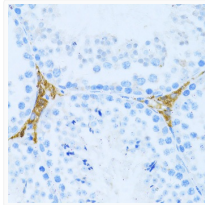
Gene ID	57542
Gene Symbol	KLHL42
UniProt ID	KLH42_HUMAN
Immunogen Region	206-505
Immunogen Sequence	PLAPHPYQGEPSSMLRYEEM TERWFPLANNLPPDLVNVVRG YGSAILDNYLFIVGGYRITS QEISAHNSYNPSTNEWLQVA SMNQKRSNFKLVAVNSKLYA IGGQAVSNVECYNPEQDAWN FVAPLPNPLAEFSACECKGK IYVIGGYTTRDRNMNLIQYC PSSDMWTLFETCDVHIRKQQ MVSVEETIYVGGCLHELGP NRRSSQSEDMLTVQSYNTVT RQWLYLKENTSKSGLNLTC
Specificity	Recombinant fusion protein containing a sequence corresponding to amino acids 206-505 of human KLHL42 (NP_065833.1).

ADDITIONAL INFORMATION

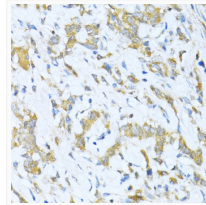
Note **STRICTLY FOR FURTHER SCIENTIFIC RESEARCH USE ONLY (RUO). MUST NOT TO BE USED IN DIAGNOSTIC OR THERAPEUTIC APPLICATIONS.**



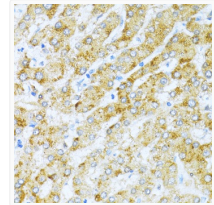
Immunohistochemistry analysis of paraffin-embedded mouse kidney using KLHL42 antibody (STJ116406) at dilution of 1:100 (40x lens). Perform microwave antigen retrieval with 10 mM PBS buffer pH 7.2 before commencing with immunohistochemistry staining protocol.



Immunohistochemistry analysis of paraffin-embedded mouse testis Leydig using KLHL42 antibody (STJ116406) at dilution of 1:100 (40x lens). Perform microwave antigen retrieval with 10 mM PBS buffer pH 7.2 before commencing with immunohistochemistry staining protocol.



Immunohistochemistry analysis of paraffin-embedded human gastric cancer using KLHL42 antibody (STJ116406) at dilution of 1:100 (40x lens). Perform microwave antigen retrieval with 10 mM PBS buffer pH 7.2 before commencing with immunohistochemistry staining protocol.



Immunohistochemistry analysis of paraffin-embedded human liver using KLHL42 antibody (STJ116406) at dilution of 1:100 (40x lens). Perform microwave antigen retrieval with 10 mM PBS buffer pH 7.2 before commencing with immunohistochemistry staining protocol.