

## Anti-Phospho-ACLY-S455 antibody (STJ116399)

### GENERAL INFORMATION

Product Type	Primary antibodies
Applications	WB/IHC-P/IP/ELISA
Host / Source	Rabbit
Reactivity	Human/Mouse/Rat

### PRODUCT PROPERTIES

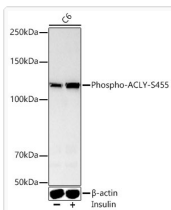
Clonality	Polyclonal
Concentration	Lot specific
Conjugation	Unconjugated
Purification	Affinity purification
Dilution Range	WB:1:100-1:500 IHC-P:1:50-1:100 IP:0.5 Mu g-4 Mu g antibody for 200 Mu g-400 Mu g extracts of whole cells ELISA:Recommended starting concentration is 1 Mu g/mL. Please optimize the concentration based on your specific assay requirements.
Formulation	PBS with 0.05% Proclin300, 50% Glycerol, pH 7.3.
Isotype	IgG
Molecular Weight	Protein Mw: 121kDa Observed Mw: 125kDa
Storage Instruction	Store at-20°C for up to 1 year from the date of receipt, and avoid repeat freeze-thaw cycles.

### TARGET INFORMATION

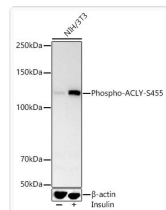
Gene ID	<a href="#">47</a>
Gene Symbol	<a href="#">ACLY</a>
UniProt ID	<a href="#">ACLY_HUMAN</a>
Immunogen Sequence	RTASFS
Specificity	A synthetic phosphorylated peptide around S455 of human ACLY (NP_001087.2).

### ADDITIONAL INFORMATION

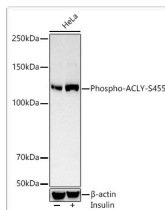
Note	STRICTLY FOR FURTHER SCIENTIFIC RESEARCH USE ONLY (RUO). MUST NOT TO BE USED IN DIAGNOSTIC OR THERAPEUTIC APPLICATIONS.
------	---



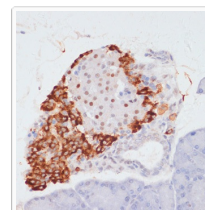
Western blot analysis of lysates from C6 cells using Phospho-ACLY-S455 Rabbit pAb (STJ116399) at 1:400 dilution. C6 cells were treated by Insulin (100 ng/mL) at 37 °C for 30 minutes after serum-starvation overnight. Secondary antibody: HRP-conjugated Goat anti-Rabbit IgG (H+L) (STJS000856) at 1:10000 dilution. Lysates/proteins: 25 Mu g per lane. Blocking buffer: 3% nonfat dry milk in TBST. Detection: ECL Basic Kit Exposure time: 60s.



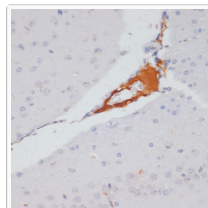
Western blot analysis of lysates from NIH/3T3 cells using Phospho-ACLY-S455 Rabbit pAb (STJ116399) at 1:400 dilution. NIH/3T3 cells were treated by Insulin (200 nM) at 37 °C for 30 minutes after serum-starvation overnight. Secondary antibody: HRP-conjugated Goat anti-Rabbit IgG (H+L) (STJS000856) at 1:10000 dilution. Lysates/proteins: 25 Mu g per lane. Blocking buffer: 3% nonfat dry milk in TBST. Detection: ECL Basic Kit Exposure time: 60s.



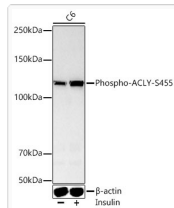
Western blot analysis of lysates from HeLa cells using Phospho-ACLY-S455 Rabbit pAb (STJ116399) at 1:400 dilution. HeLa cells were treated by Insulin (50 nM) at 37 °C for 30 minutes after serum-starvation overnight. Secondary antibody: HRP-conjugated Goat anti-Rabbit IgG (H+L) (STJS000856) at 1:10000 dilution. Lysates/proteins: 25 Mu g per lane. Blocking buffer: 3% nonfat dry milk in TBST. Detection: ECL Basic Kit Exposure time: 60s.



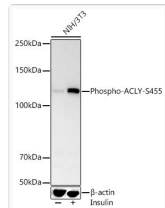
Immunohistochemistry analysis of paraffin-embedded Rat pancreas using Phospho-ACLY-S455 Rabbit pAb (STJ116399) at dilution of 1:100 (40x lens). Microwave antigen retrieval performed with 0.01M Tris/EDTA Buffer (pH 9.0) prior to immunohistochemistry staining.



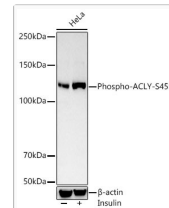
Immunohistochemistry analysis of paraffin-embedded Mouse brain using Phospho-ACLY-S455 Rabbit pAb (STJ116399) at dilution of 1:100 (40x lens). Microwave antigen retrieval performed with 0.01M Tris/EDTA Buffer (pH 9.0) prior to immunohistochemistry staining.



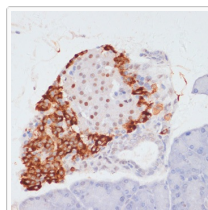
Western blot analysis of lysates from C6 cells using Phospho-ACLY-S455 Rabbit pAb (STJ116399) at 1:400 dilution. C6 cells were treated by Insulin (100 ng/mL) at 37C for 30 minutes after serum-starvation overnight. Secondary antibody: HRP-conjugated Goat anti-Rabbit IgG (H+L) (STJS000856) at 1:10000 dilution. Lysates/proteins: 25 Mu g per lane. Blocking buffer: 3% nonfat dry milk in TBST. Detection: ECL Basic Kit Exposure time: 60s.



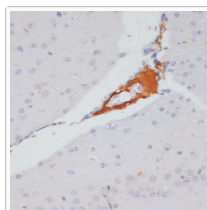
Western blot analysis of lysates from NIH/3T3 cells using Phospho-ACLY-S455 Rabbit pAb (STJ116399) at 1:400 dilution. NIH/3T3 cells were treated by Insulin (200 nM) at 37C for 30 minutes after serum-starvation overnight. Secondary antibody: HRP-conjugated Goat anti-Rabbit IgG (H+L) (STJS000856) at 1:10000 dilution. Lysates/proteins: 25 Mu g per lane. Blocking buffer: 3% nonfat dry milk in TBST. Detection: ECL Basic Kit Exposure time: 60s.



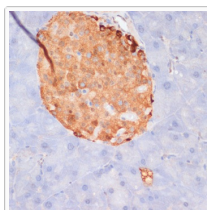
Western blot analysis of lysates from HeLa cells using Phospho-ACLY-S455 Rabbit pAb (STJ116399) at 1:400 dilution. HeLa cells were treated by Insulin (50 nM) at 37C for 30 minutes after serum-starvation overnight. Secondary antibody: HRP-conjugated Goat anti-Rabbit IgG (H+L) (STJS000856) at 1:10000 dilution. Lysates/proteins: 25 Mu g per lane. Blocking buffer: 3% nonfat dry milk in TBST. Detection: ECL Basic Kit Exposure time: 60s.



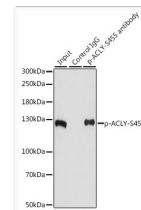
Immunohistochemistry analysis of paraffin-embedded Rat pancreas using Phospho-ACLY-S455 Rabbit pAb (STJ116399) at dilution of 1:100 (40x lens). Microwave antigen retrieval performed with 0.01M Tris/EDTA Buffer (pH 9.0) prior to immunohistochemistry staining.



Immunohistochemistry analysis of paraffin-embedded Mouse brain using Phospho-ACLY-S455 Rabbit pAb (STJ116399) at dilution of 1:100 (40x lens). Microwave antigen retrieval performed with 0.01M Tris/EDTA Buffer (pH 9.0) prior to immunohistochemistry staining.



Immunohistochemistry analysis of paraffin-embedded Mouse pancreas using Phospho-ACLY-S455 Rabbit pAb (STJ116399) at dilution of 1:100 (40x lens). Microwave antigen retrieval performed with 0.01M Tris/EDTA Buffer (pH 9.0) prior to immunohistochemistry staining.



Immunoprecipitation analysis of 200 Mu g extracts of NIH/3T3 cells, using 3 Mu g Phospho-ACLY-S455 pAb (STJ116399). Western blot was performed from the immunoprecipitate using Phospho-ACLY-S455 pAb (STJ116399) at a dilution of 1:1000. NIH/3T3 cells were treated by Insulin (100 nM) at 37C for 10 minutes after serum-starvation overnight.