

Anti-ST8SIA1 antibody (49-270) (STJ116365)

GENERAL INFORMATION

Product Type	Primary antibodies
Applications	WB/ELISA
Host / Source	Rabbit
Reactivity	Mouse

PRODUCT PROPERTIES

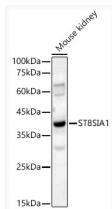
Clonality	Polyclonal
Concentration	Lot specific
Conjugation	Unconjugated
Purification	Affinity purification
Dilution Range	WB:1:2000-1:9000 ELISA:Recommended starting concentration is 1 µg/mL. Please optimize the concentration based on your specific assay requirements.
Formulation	PBS with 0.05% Proclin300, 50% Glycerol, pH 7.3.
Isotype	IgG
Molecular Weight	Protein Mw: 41kDa Observed Mw: 41kDa
Storage Instruction	Store at -20°C for up to 1 year from the date of receipt, and avoid repeat freeze-thaw cycles.

TARGET INFORMATION

Gene ID	6489
Gene Symbol	ST8SIA1
UniProt ID	SIA8A_HUMAN
Immunogen Region	49-270
Immunogen Sequence	YRLPNEKEIVQGVLQQGTAW RRNQTAAARAFRQKMEDCCDP AHLFAMTKMNSPMGKSMWYD GEFLYSFTIDNSTYSLFPQA TPFQLPLKCAVVGNGGILK KSGCGRQIDEANFVMRCNLP PLSSEYTKDVGSKSQLVTAN PSIRQRFNQLLWSRKTFFVD NMKIYNHSYIYMPAFSMKTG TEPSLRVYYTLSDVGNQTV LFANPNFLRSIGKFWKSRGI HA
Specificity	Recombinant fusion protein containing a sequence corresponding to amino acids 49-270 of human ST8SIA1 (NP_003025.1).

ADDITIONAL INFORMATION

Note **STRICTLY FOR FURTHER SCIENTIFIC RESEARCH USE ONLY (RUO). MUST NOT TO BE USED IN DIAGNOSTIC OR THERAPEUTIC APPLICATIONS.**



Western blot analysis of lysates from Mouse kidney, using ST8SIA1 Rabbit pAb (STJ116365) at 1:8000 dilution.
 Secondary antibody: HRP-conjugated Goat anti-Rabbit IgG (H+L) (STJS000856) at 1:10000 dilution.
 Lysates/proteins: 25 µg per lane.
 Blocking buffer: 3% nonfat dry milk in TBST.
 Detection: ECL Basic Kit
 Exposure time: 90s.