

## Anti-ERC1 antibody (700-850) (STJ116361)

### GENERAL INFORMATION

|               |                    |
|---------------|--------------------|
| Product Type  | Primary antibodies |
| Applications  | WB/ELISA           |
| Host / Source | Rabbit             |
| Reactivity    | Human/Mouse/Rat    |

### PRODUCT PROPERTIES

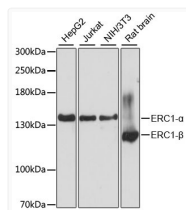
|                     |                                                                                                                                                      |
|---------------------|------------------------------------------------------------------------------------------------------------------------------------------------------|
| Clonality           | Polyclonal                                                                                                                                           |
| Concentration       | Lot specific                                                                                                                                         |
| Conjugation         | Unconjugated                                                                                                                                         |
| Purification        | Affinity purification                                                                                                                                |
| Dilution Range      | WB:1:500-1:2000<br>ELISA:Recommended starting concentration is 1 µg/mL. Please optimize the concentration based on your specific assay requirements. |
| Formulation         | PBS with 0.01% Thimerosal, 50% Glycerol, pH 7.3.                                                                                                     |
| Isotype             | IgG                                                                                                                                                  |
| Molecular Weight    | Protein Mw: 128kDa<br>Observed Mw: 130-120kDa                                                                                                        |
| Storage Instruction | Store at -20°C for up to 1 year from the date of receipt, and avoid repeat freeze-thaw cycles.                                                       |

### TARGET INFORMATION

|                    |                                                                                                                                                                      |
|--------------------|----------------------------------------------------------------------------------------------------------------------------------------------------------------------|
| Gene ID            | <a href="#">23085</a>                                                                                                                                                |
| Gene Symbol        | <a href="#">ERC1</a>                                                                                                                                                 |
| UniProt ID         | <a href="#">RB612_HUMAN</a>                                                                                                                                          |
| Immunogen Region   | 700-850                                                                                                                                                              |
| Immunogen Sequence | EIALEQKKEECLKMESQLKK AHEAALARASPEMSDRIQH LEREITRYKDESSKAQAEVD<br>RLLEILKEVENEKNDKDKKI AELERQVKDQNKKVANLKHK EQVEKKKSAQMLEEARRRED<br>NLNDSSQQLQDSLRRKKDDRI EEELEALRESV |
| Specificity        | Recombinant fusion protein containing a sequence corresponding to amino acids 700-850 of human ERC1 (NP_829884.1).                                                   |

### ADDITIONAL INFORMATION

Note STRICTLY FOR FURTHER SCIENTIFIC RESEARCH USE ONLY (RUO). MUST NOT TO BE USED IN DIAGNOSTIC OR THERAPEUTIC APPLICATIONS.



Western blot analysis of various lysates using ERC1 Rabbit pAb (STJ116361) at 1:3000 dilution. Secondary antibody: HRP-conjugated Goat anti-Rabbit IgG (H+L) (STJS000856) at 1:10000 dilution.

Lysates/proteins: 25 µg per lane.  
 Blocking buffer: 3% nonfat dry milk in TBST.  
 Detection: ECL Basic Kit  
 Exposure time: 15s.