

Anti-TOM1 antibody (314-493) (STJ116355)

GENERAL INFORMATION

Product Type	Primary antibodies
Applications	WB/ELISA
Host / Source	Rabbit
Reactivity	Mouse/Rat

PRODUCT PROPERTIES

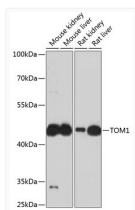
Clonality	Polyclonal
Concentration	Lot specific
Conjugation	Unconjugated
Purification	Affinity purification
Dilution Range	WB:1:500-1:2000 ELISA:Recommended starting concentration is 1 µg/mL. Please optimize the concentration based on your specific assay requirements.
Formulation	PBS with 0.01% Thimerosal, 50% Glycerol, pH 7.3.
Isotype	IgG
Molecular Weight	Protein Mw: 54kDa Observed Mw: 54kDa
Storage Instruction	Store at -20°C for up to 1 year from the date of receipt, and avoid repeat freeze-thaw cycles.

TARGET INFORMATION

Gene ID	10043
Gene Symbol	TOM1
UniProt ID	TOM1_HUMAN
Immunogen Region	314-493
Immunogen Sequence	SEAEPAADLIDMGPDPAATG NLSSQLAGMNLGSSSVRAGL QSLEASGRLEDEFDMFALTR GSSLADQRKEVKYEAPQATD GLAGALDARQQSTGAIPVTQ ACLMEDIEQWLSTDVGNDAE EPKGVTSSEKFKDFLEERAK AADRLPNLSSPSAEGPPGPP SGPAPRKKKTQEKDDMLFAL
Specificity	Recombinant fusion protein containing a sequence corresponding to amino acids 314-493 of human TOM1 (NP_001129204.1).

ADDITIONAL INFORMATION

Note STRICTLY FOR FURTHER SCIENTIFIC RESEARCH USE ONLY (RUO). MUST NOT TO BE USED IN DIAGNOSTIC OR THERAPEUTIC APPLICATIONS.



Western blot analysis of various lysates using TOM1 Rabbit pAb (STJ116355) at 1:3000 dilution. Secondary antibody: HRP-conjugated Goat anti-Rabbit IgG (H+L) (STJS000856) at 1:10000 dilution.

Lysates/proteins: 25 µg per lane.
 Blocking buffer: 3% nonfat dry milk in TBST.
 Detection: ECL Basic Kit
 Exposure time: 90s.