

## Anti-RPL26L1 antibody (1-145) (STJ116346)

### GENERAL INFORMATION

Product Type	Primary antibodies
Applications	WB/ELISA
Host / Source	Rabbit
Reactivity	Human

### PRODUCT PROPERTIES

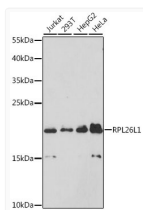
Clonality	Polyclonal
Concentration	Lot specific
Conjugation	Unconjugated
Purification	Affinity purification
Dilution Range	WB:1:200-1:2000 ELISA:Recommended starting concentration is 1 Mu g/mL. Please optimize the concentration based on your specific assay requirements.
Formulation	PBS with 0.01% Thimerosal, 50% Glycerol, pH 7.3.
Isotype	IgG
Molecular Weight	Protein Mw: 17kDa Observed Mw: 20kDa
Storage Instruction	Store at -20°C for up to 1 year from the date of receipt, and avoid repeat freeze-thaw cycles.

### TARGET INFORMATION

Gene ID	<a href="#">51121</a>
Gene Symbol	<a href="#">RPL26L1</a>
UniProt ID	<a href="#">RL26L_HUMAN</a>
Immunogen Region	1-145
Immunogen Sequence	MKFNPFVTSDRSKNRKRHFN APSHVRRKIMSSPLSKELRQ KYNVRSMPIRKDDDEVQVVRG HYKQQIGKVVQVYRKKYVI YIERVQREKANGTTVHVGIH PSKVITRLKLDKDRKKILE RKAKSRQVGKEKGKYKEELI EKMQE
Specificity	Recombinant fusion protein containing a sequence corresponding to amino acids 1-145 of human RPL26L1 (NP_057177.1).

### ADDITIONAL INFORMATION

Note STRICTLY FOR FURTHER SCIENTIFIC RESEARCH USE ONLY (RUO). MUST NOT TO BE USED IN DIAGNOSTIC OR THERAPEUTIC APPLICATIONS.



Western blot analysis of various lysates using RPL26L1 Rabbit pAb (STJ116346) at 1:3000 dilution.

Secondary antibody: HRP-conjugated Goat anti-Rabbit IgG (H+L) (STJS000856) at 1:10000 dilution.

Lysates/proteins: 25 Mu g per lane.  
 Blocking buffer: 3% nonfat dry milk in TBST.  
 Detection: ECL Enhanced Kit  
 Exposure time: 90s.