

Anti-SNX15 antibody (1-342) (STJ116345)

GENERAL INFORMATION

Product Type	Primary antibodies
Applications	WB/IF/ICC/ELISA
Host / Source	Rabbit
Reactivity	Human/Mouse/Rat

PRODUCT PROPERTIES

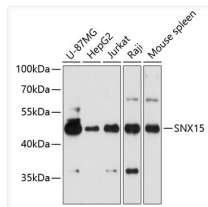
Clonality	Polyclonal
Concentration	Lot specific
Conjugation	Unconjugated
Purification	Affinity purification
Dilution Range	WB:1:500-1:2000 IF/CC:1:50-1:200 ELISA:Recommended starting concentration is 1 μ g/mL. Please optimize the concentration based on your specific assay requirements.
Formulation	PBS with 0.01% Thimerosal, 50% Glycerol, pH 7.3.
Isotype	IgG
Molecular Weight	Protein Mw: 38kDa Observed Mw: 50kDa
Storage Instruction	Store at -20°C for up to 1 year from the date of receipt, and avoid repeat freeze-thaw cycles.

TARGET INFORMATION

Gene ID	29907
Gene Symbol	SNX15
UniProt ID	SNX15_HUMAN
Immunogen Region	1-342
Immunogen Sequence	MSRQAKDDFLRHVTSDPRT HPKGYTEYKVTQAQFISKDDP EDVKEVVVWKRYSDFRKLHG DLAYTHRNLFRRLEEFPAFP RAQVFGFRFEASVIEERRKGA EDLLRFTVHIPALNNSPQLK EFFRGGVEVTRPLEVSRDLHI LPPPLIPTPPPDDPRLSQL PAERRGLEELEVVDPPSS PAQEALDLLFNCESTEEASG SPARGPLTEAELALFDPPFSK EEGAAPSPTHVAELATMEV
Specificity	Recombinant fusion protein containing a sequence corresponding to amino acids 1-342 of human SNX15 (NP_037438.2).

ADDITIONAL INFORMATION

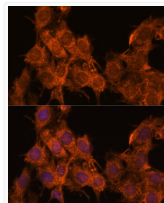
Note STRICTLY FOR FURTHER SCIENTIFIC RESEARCH USE ONLY (RUO). MUST NOT TO BE USED IN DIAGNOSTIC OR THERAPEUTIC APPLICATIONS.



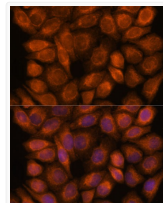
Western blot analysis of various lysates using SNX15 Rabbit pAb (STJ116345) at 1:3000 dilution.

Secondary antibody: HRP-conjugated Goat anti-Rabbit IgG (H+L) (STJS000856) at 1:10000 dilution.

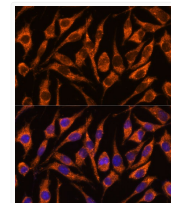
Lysates/proteins: 25 μ g per lane.
Blocking buffer: 3% nonfat dry milk in TBST.
Detection: ECL Basic Kit
Exposure time: 30s.



Immunofluorescence analysis of C6 cells using SNX15 Rabbit pAb (STJ116345) at dilution of 1:100. Secondary antibody: Cy3-conjugated Goat anti-Rabbit IgG (H+L) (STJS001166) at 1:500 dilution. Blue: DAPI for nuclear staining.



Immunofluorescence analysis of HeLa cells using SNX15 Rabbit pAb (STJ116345) at dilution of 1:100. Secondary antibody: Cy3-conjugated Goat anti-Rabbit IgG (H+L) (STJS001166) at 1:500 dilution. Blue: DAPI for nuclear staining.



Immunofluorescence analysis of L929 cells using SNX15 Rabbit pAb (STJ116345) at dilution of 1:100. Secondary antibody: Cy3-conjugated Goat anti-Rabbit IgG (H+L) (STJS001166) at 1:500 dilution. Blue: DAPI for nuclear staining.