

## Anti-NPHP4 antibody (1247-1426) (STJ116333)

### GENERAL INFORMATION

Product Type	Primary antibodies
Applications	WB/IF/ICC/ELISA
Host / Source	Rabbit
Reactivity	Human/Mouse/Rat

### PRODUCT PROPERTIES

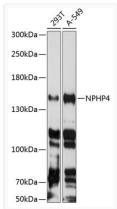
Clonality	Polyclonal
Concentration	Lot specific
Conjugation	Unconjugated
Purification	Affinity purification
Dilution Range	WB:1:1000-1:3000 IF:1:50-1:200 ELISA:Recommended starting concentration is 1 Mu g/mL. Please optimize the concentration based on your specific assay requirements.
Formulation	PBS with 0.01% Thimerosal, 50% Glycerol, pH 7.3.
Isotype	IgG
Molecular Weight	Protein Mw: 158kDa Observed Mw: 157kDa
Storage Instruction	Store at -20°C for up to 1 year from the date of receipt, and avoid repeat freeze-thaw cycles.

### TARGET INFORMATION

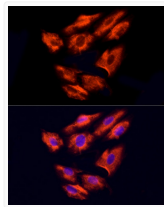
Gene ID	<a href="#">261734</a>
Gene Symbol	<a href="#">NPHP4</a>
UniProt ID	<a href="#">NPHP4_HUMAN</a>
Immunogen Region	1247-1426
Immunogen Sequence	RLSLVLRGTQTVRKVRAFTS HPOELKTDPKGVFVLPFRGV QDLHVGVRPLRAGSRFVHLN LYDVDCHQLVASWLVCLCCR QPLISKAFEIMLAAGEGKGV NKIRITYTNPYPSRRTFHLHS DHPPELLRFREDSFQVGGGET YTIGLQFAPSQRVGEIEILI YINDHEDKNEEAFCKVIYQ
Specificity	Recombinant fusion protein containing a sequence corresponding to amino acids 1247-1426 of human NPHP4 (NP_055917.1).

### ADDITIONAL INFORMATION

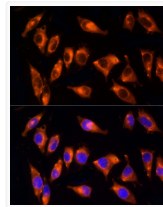
Note STRICTLY FOR FURTHER SCIENTIFIC RESEARCH USE ONLY (RUO). MUST NOT TO BE USED IN DIAGNOSTIC OR THERAPEUTIC APPLICATIONS.



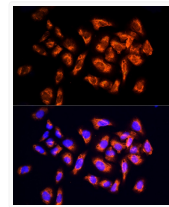
Western blot analysis of various lysates using NPHP4 Rabbit pAb (STJ116333) at 1:3000 dilution.  
Secondary antibody: HRP-conjugated Goat anti-Rabbit IgG (H+L) (STJS000856) at 1:10000 dilution.  
Lysates/proteins: 25 Mu g per lane.  
Blocking buffer: 3% nonfat dry milk in TBST.  
Detection: ECL Enhanced Kit  
Exposure time: 30s.



Immunofluorescence analysis of H9C2 cells using NPHP4 Rabbit pAb (STJ116333) at dilution of 100 (40x lens). Secondary antibody: Cy3-conjugated Goat anti-Rabbit IgG (H+L) (STJS001166) at 1:500 dilution. Blue: DAPI for nuclear staining.



Immunofluorescence analysis of L929 cells using NPHP4 Rabbit pAb (STJ116333) at dilution of 100 (40x lens). Secondary antibody: Cy3-conjugated Goat anti-Rabbit IgG (H+L) (STJS001166) at 1:500 dilution. Blue: DAPI for nuclear staining.



Immunofluorescence analysis of U2OS cells using NPHP4 Rabbit pAb (STJ116333) at dilution of 100 (40x lens). Secondary antibody: Cy3-conjugated Goat anti-Rabbit IgG (H+L) (STJS001166) at 1:500 dilution. Blue: DAPI for nuclear staining.