

Anti-MED17 antibody (250-460) (STJ116326)

GENERAL INFORMATION

Product Type	Primary antibodies
Applications	WB/ELISA
Host / Source	Rabbit
Reactivity	Human/Mouse/Rat

PRODUCT PROPERTIES

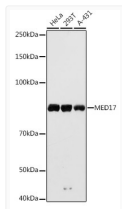
Clonality	Polyclonal
Concentration	Lot specific
Conjugation	Unconjugated
Purification	Affinity purification
Dilution Range	WB:1:500-1:1000 ELISA:Recommended starting concentration is 1 µg/mL. Please optimize the concentration based on your specific assay requirements.
Formulation	PBS with 0.01% Thimerosal, 50% Glycerol, pH 7.3.
Isotype	IgG
Molecular Weight	Protein Mw: 73kDa Observed Mw: 80kDa
Storage Instruction	Store at -20°C for up to 1 year from the date of receipt, and avoid repeat freeze-thaw cycles.

TARGET INFORMATION

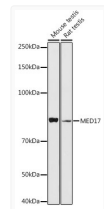
Gene ID	9440
Gene Symbol	MED17
UniProt ID	MED17_HUMAN
Immunogen Region	250-460
Immunogen Sequence	DLEGSAYIKVSIQKQAPDIG DLGTVNLFKRPLPKSKPGSP HWQTKLEAAQNVLCKEIFA QLSREAVQIKSQVPHIVVKN QIISQPFPSLQLSISLCHSS NDKKSQKFATEKQCPEDHLY VLEHNLHLLIREFHKQTLSS IMMPPASAPFGHKRMRLSG PQAQFDKNEINLSQSSGELLE KIIKQAKHIFLRSRAAATID SLASRIEDPQI
Specificity	Recombinant fusion protein containing a sequence corresponding to amino acids 250-460 of human MED17 (NP_004259.3).

ADDITIONAL INFORMATION

Note **STRICTLY FOR FURTHER SCIENTIFIC RESEARCH USE ONLY (RUO). MUST NOT TO BE USED IN DIAGNOSTIC OR THERAPEUTIC APPLICATIONS.**



Western blot analysis of various lysates using MED17 Rabbit pAb (STJ116326) at 1:1000 dilution.
 Secondary antibody: HRP-conjugated Goat anti-Rabbit IgG (H+L) (STJS000856) at 1:10000 dilution.
 Lysates/proteins: 25 µg per lane.
 Blocking buffer: 3% nonfat dry milk in TBST.
 Detection: ECL Basic Kit
 Exposure time: 10s.



Western blot analysis of various lysates using MED17 Rabbit pAb (STJ116326) at 1:1000 dilution.
 Secondary antibody: HRP-conjugated Goat anti-Rabbit IgG (H+L) (STJS000856) at 1:10000 dilution.
 Lysates/proteins: 25 µg per lane.
 Blocking buffer: 3% nonfat dry milk in TBST.
 Detection: ECL Basic Kit
 Exposure time: 90s.