

## Anti-TIMM23 antibody (7-209) (STJ116323)

### GENERAL INFORMATION

Product Type	Primary antibodies
Applications	WB/IF/ICC/ELISA
Host / Source	Rabbit
Reactivity	Human/Mouse/Rat

### PRODUCT PROPERTIES

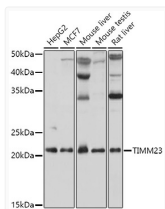
Clonality	Polyclonal
Concentration	Lot specific
Conjugation	Unconjugated
Purification	Affinity purification
Dilution Range	WB:1:500-1:1000 IF/CC:1:50-1:200 ELISA:Recommended starting concentration is 1 µg/mL. Please optimize the concentration based on your specific assay requirements.
Formulation	PBS with 0.09% Sodium Azide, 50% Glycerol, pH7.3.
Isotype	IgG
Molecular Weight	Protein Mw: 22kDa Observed Mw: 22kDa
Storage Instruction	Store at -20°C for up to 1 year from the date of receipt, and avoid repeat freeze-thaw cycles.

### TARGET INFORMATION

Gene ID	<a href="#">100287932</a>
Gene Symbol	<a href="#">TIMM23</a>
UniProt ID	<a href="#">TIM23_HUMAN</a>
Immunogen Region	7-209
Immunogen Sequence	SGNKTTGGLAGFFGAGGAGY SHADLAGVPLTGMNPLSPYL NVDPRYLVDQDFILPTGA NKTRGR
Specificity	Recombinant fusion protein containing a sequence corresponding to amino acids 7-72 of human TIMM23 (NP_006318.1).

### ADDITIONAL INFORMATION

Note **STRICTLY FOR FURTHER SCIENTIFIC RESEARCH USE ONLY (RUO). MUST NOT TO BE USED IN DIAGNOSTIC OR THERAPEUTIC APPLICATIONS.**

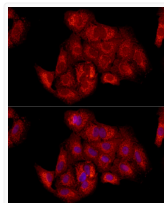


Western blot analysis of various lysates using TIMM23 Rabbit pAb (STJ116323) at 1:1000 dilution.

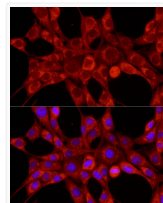
Secondary antibody: HRP-conjugated Goat anti-Rabbit IgG (H+L) (STJS000856) at 1:10000 dilution.

Lysates/proteins: 25 µg per lane.  
Blocking buffer: 3% nonfat dry milk in TBST.

Detection: ECL Basic Kit  
Exposure time: 1s.



Immunofluorescence analysis of A549 cells using TIMM23 Rabbit pAb (STJ116323) at dilution of 1:100 (40x lens). Secondary antibody: Cy3-conjugated Goat anti-Rabbit IgG (H+L) (STJS001166) at 1:500 dilution. Blue: DAPI for nuclear staining.



Immunofluorescence analysis of NIH/3T3 cells using TIMM23 Rabbit pAb (STJ116323) at dilution of 1:100 (40x lens). Secondary antibody: Cy3-conjugated Goat anti-Rabbit IgG (H+L) (STJS001166) at 1:500 dilution. Blue: DAPI for nuclear staining.