

Anti-MAGEA6 antibody (75-314) (STJ116318)

GENERAL INFORMATION

Product Type	Primary antibodies
Applications	WB/IF/ICC/ELISA
Host / Source	Rabbit
Reactivity	Human/Mouse

PRODUCT PROPERTIES

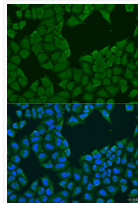
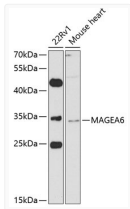
Clonality	Polyclonal
Concentration	Lot specific
Conjugation	Unconjugated
Purification	Affinity purification
Dilution Range	WB:1:500-1:2000 IF/CC:1:50-1:200 ELISA:Recommended starting concentration is 1 μ g/mL. Please optimize the concentration based on your specific assay requirements.
Formulation	PBS with 0.02% Sodium Azide, 50% Glycerol, pH 7.3.
Isotype	IgG
Molecular Weight	Protein Mw: 35kDa Observed Mw: 35kDa
Storage Instruction	Store at -20°C for up to 1 year from the date of receipt, and avoid repeat freeze-thaw cycles.

TARGET INFORMATION

Gene ID	4105
Gene Symbol	MAGEA6
UniProt ID	MAGA6_HUMAN
Immunogen Region	75-314
Immunogen Sequence	MNYPLWSQSIEDSSNQEEEG PSTFPDLESEFQAALSRKVA KLVHFLLLKYRAREPVTKAE MLGSVVGNWQYFFPVIFSKA SDSLQLVFGIELMEVDPIGH VYIFATCLGLSYDGLLDNQ IMPKTGFLIILAIKEGD CAPEEKIWEELSVLEVFEGR EDSIFGDPKLLTQYFVQEN YLEYRQVPGSDPACYEFLWG PRALIETSYVKVLHHMKIS GGPRISYPLLHEWALREGE
Specificity	Recombinant fusion protein containing a sequence corresponding to amino acids 75-314 of human MAGEA6 (NP_005354.1).

ADDITIONAL INFORMATION

Note STRICTLY FOR FURTHER SCIENTIFIC RESEARCH USE ONLY (RUO). MUST NOT TO BE USED IN DIAGNOSTIC OR THERAPEUTIC APPLICATIONS.



Western blot analysis of various lysates using MAGEA6 Rabbit pAb (STJ116318) at 1:1000 dilution.

Secondary antibody: HRP-conjugated Goat anti-Rabbit IgG (H+L) (STJS000856) at 1:10000 dilution.

Lysates/proteins: 25 μ g per lane.
Blocking buffer: 3% nonfat dry milk in TBST.
Detection: ECL Basic Kit
Exposure time: 90s.

Immunofluorescence analysis of U2OS cells using MAGEA6 Rabbit pAb (STJ116318) at dilution of 1:100. Secondary antibody: Cy3-conjugated Goat anti-Rabbit IgG (H+L) (STJS001166) at 1:500 dilution. Blue: DAPI for nuclear staining.